

## Programs and Events

### Linking & Learning: Building Sustainability Through Endowment Funds

January 22 | 6 - 8 p.m. | In-person, Spruce Grove Community Social Development, 414 King St.

Register: [sprucegrove.org/LinkingAndLearning](https://sprucegrove.org/LinkingAndLearning).

### Come for the skate, stay for the coffee!

Spruce Grove seniors 60+, public skating isn't just for the kids! Join us for Seniors' Skate every Wednesday at Heavy Metal Place. Practice your stride, stay active, and catch up with friends. Then afterwards, enjoy free coffee in the Heavy Metal Place Atrium! Free to join and no registration required. See the schedule at [sprucegrove.org/IcePrograms](https://sprucegrove.org/IcePrograms).

### Take a winter walk in Heritage Grove Park

A walk through Heritage Grove Park in winter is a great way to enjoy some fresh air and take in the quiet beauty of the season. Snow-covered trees, open views and maintained asphalt pathways make the park an inviting place to get moving, even on colder days.

Remember to dress for the weather, stay on cleared pathways, leash and clean up after dogs, and be respectful of other park users to help everyone enjoy the trails safely. Learn more at [sprucegrove.org/HeritagePark](https://sprucegrove.org/HeritagePark).



## Career Opportunities

- Manager of Enterprise Infrastructure and Operations
- Human Resources Business Partner
- Manager of Current Planning
- Theatre and Events Technician

For details or to apply, visit [sprucegrove.org/Careers](https://sprucegrove.org/Careers).

## News You Can Use

### Snow removal in Spruce Grove

Snow removal is currently underway in Spruce Grove, and that means parking restrictions are in place in some areas. Please watch for signs and move vehicles and other obstacles (such as basketball hoops, hockey nets, and waste carts) to help create an obstacle-free zone and prevent vehicle towing.

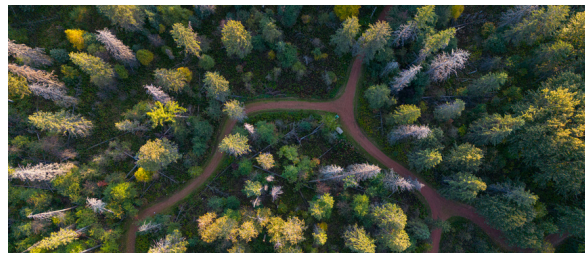
Remember to give crews room to work and use caution when near equipment.

Check progress online and learn more about snow removal in Spruce Grove at [sprucegrove.org/Snow](https://sprucegrove.org/Snow).



### Help make our parks and trails easier to navigate

The City is launching a Civic Wayfinding Initiative in 2026 to improve and enhance wayfinding signage in Spruce Grove's parks, trails, and City Centre area. Tell us how you get around Spruce Grove and what places matter most. Fill out the online survey at [sprucegrove.org/Wayfinding](https://sprucegrove.org/Wayfinding) by Friday, Jan. 16.



### Own a business in Spruce Grove? Renew your licence for free before January 15

You have until Thursday, January 15, to renew your business licence for FREE in CityView (conditions apply). If you haven't renewed in time, you'll have to apply for a new licence and pay the applicable fees. For renewal instructions, visit [sprucegrove.org/RenewBusLicence](https://sprucegrove.org/RenewBusLicence).

## Council Meetings

### Regular Council meeting Monday, January 12, 2026

Spruce Grove City Council's Regular Council meeting on Monday, January 12 at 6 p.m. will be open to the public and live streamed at [sprucegrove.org/Agenda](https://sprucegrove.org/Agenda).

Members of the public may participate in the Public Input Session either in person or virtually. Virtual participation may be done by registering by email [cityclerk@sprucegrove.org](mailto:cityclerk@sprucegrove.org) or by calling 780-962-7615 before noon on Monday, January 12.

Alternately, residents can submit a statement or a question to be read on their behalf by emailing [cityclerk@sprucegrove.org](mailto:cityclerk@sprucegrove.org) until the Public Input Session is complete.

Agendas and meeting minutes are available at [sprucegrove.org/Agenda](https://sprucegrove.org/Agenda).

### CityPulse E-Newsletter

Be in the know! Our bi-weekly e-newsletter is a great way to stay informed. From City news, service updates, programs, events, and initiatives, you'll get the information you need to know. [sprucegrove.org/CityPulse](https://sprucegrove.org/CityPulse)



## Notice of Development Permit Decisions

The following development permits for discretionary uses and variances have been approved under the provisions of the Land Use Bylaw. This list does not include Permitted Uses. For a full list of all Development Permit decisions, as well as how to appeal a decision of the Development Officer to the Subdivision and Development Appeal Board, please visit [sprucegrove.org/DevPermitNotices](https://sprucegrove.org/DevPermitNotices). Please direct any questions to the Planning and Development Department at 780-962-7582, Monday to Friday from 8:30 a.m. to 4:30 p.m.

Permit #	Legal Land Description	Project Address
<b>Use: Discretionary</b>		
PLDPR202501241	2421849;2;38 To construct a secondary suite	185 CALEDON CRES
PLDPR202501279	2522577;4;57 To construct a secondary suite	63 NORWYCK WAY
PLDPR202501300	2520038;11;12 To construct a secondary suite	139 PIERWYCK LOOP