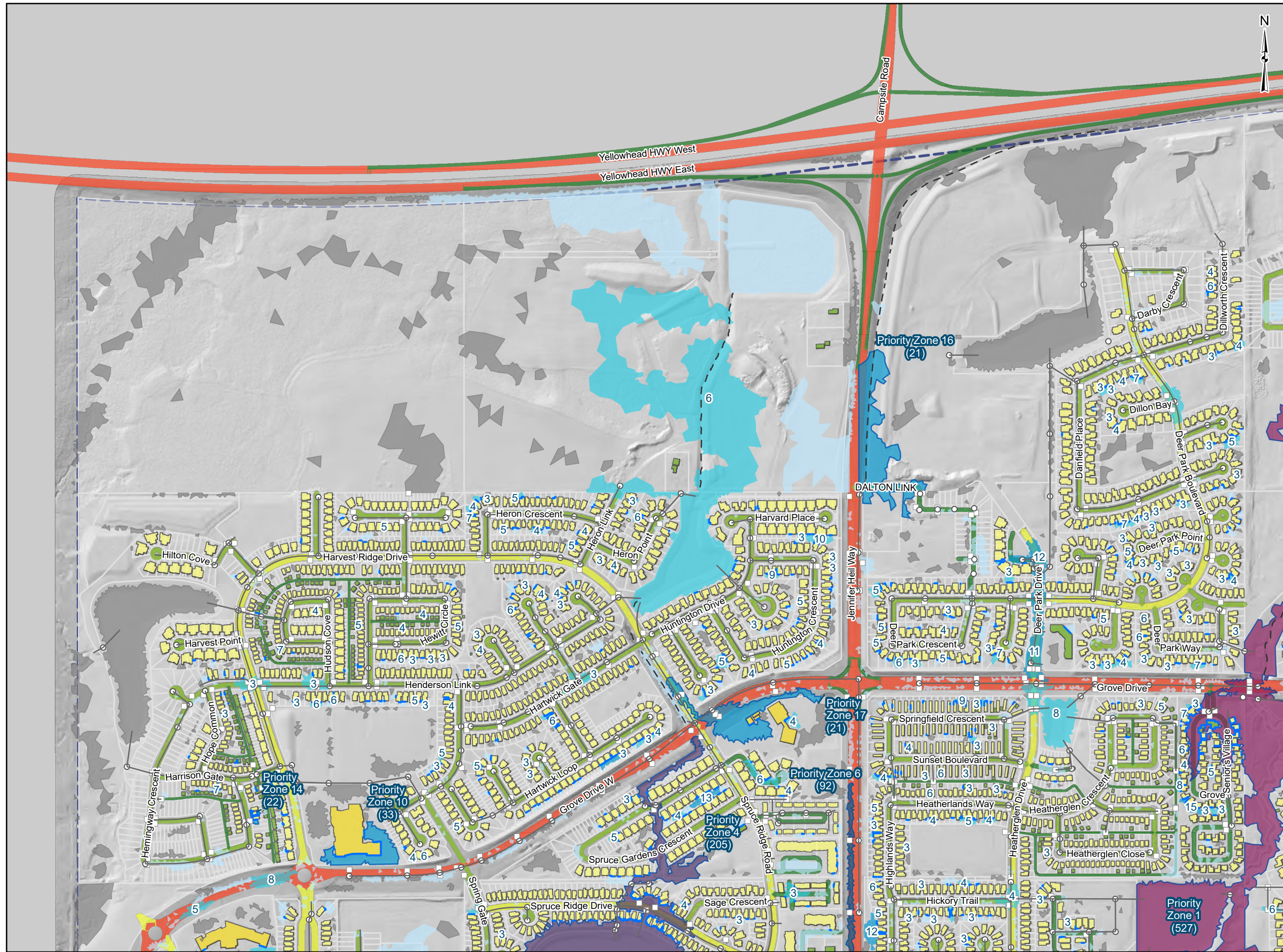




APPENDIX
Flood Hazard Risk Assessment Map Book

E



LEGEND

- Storm Manholes
- Storm Catch Basin
- Storm Main
- - Storm Ditch
- Building Flood Encroachment

Flood Zone Risk Score

- < 2.0
- 2.01 - 10.0
- 10.01 - 50.0
- 50.01 - 100.0
- 100.01 - 250.0
- 250.01 - 550.0
- 0

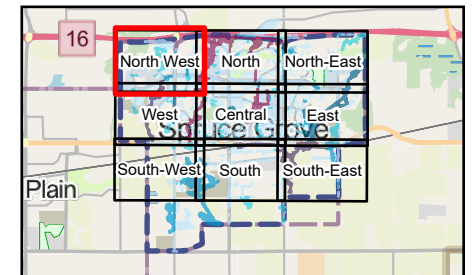
Building Class Score

- 1 - Lots of greenfield, little population
- 3 - Commercial/industrial facilities/ Storage
- 10 - Residential and more critical commercial/institutional
- 50 - Institutional facilities
- 200 - Critical facilities
- 500 - Emergency response

Transportation Footprint Score

- 1 - Alleyway, Private, Ramp
- 2 - Local
- 3 - Collector
- 4 - Arterial, Minor Arterial, Major Collector
- 5 - Highway, Major Arterial, Railway

- Property Parcel
- Municipal_Boundary



TITLE
FLOOD RISK - NORTH WEST

PROJECT
SPRUCE GROVE STORMWATER MASTER PLAN

CLIENT
THE CITY OF SPRUCE GROVE

DATA SOURCES
- Elevation data captured in 2012
- Map data © OpenStreetMap contributors, Microsoft, Facebook, Inc. and its affiliates, Esri Community Maps contributors, Map layer by Esri

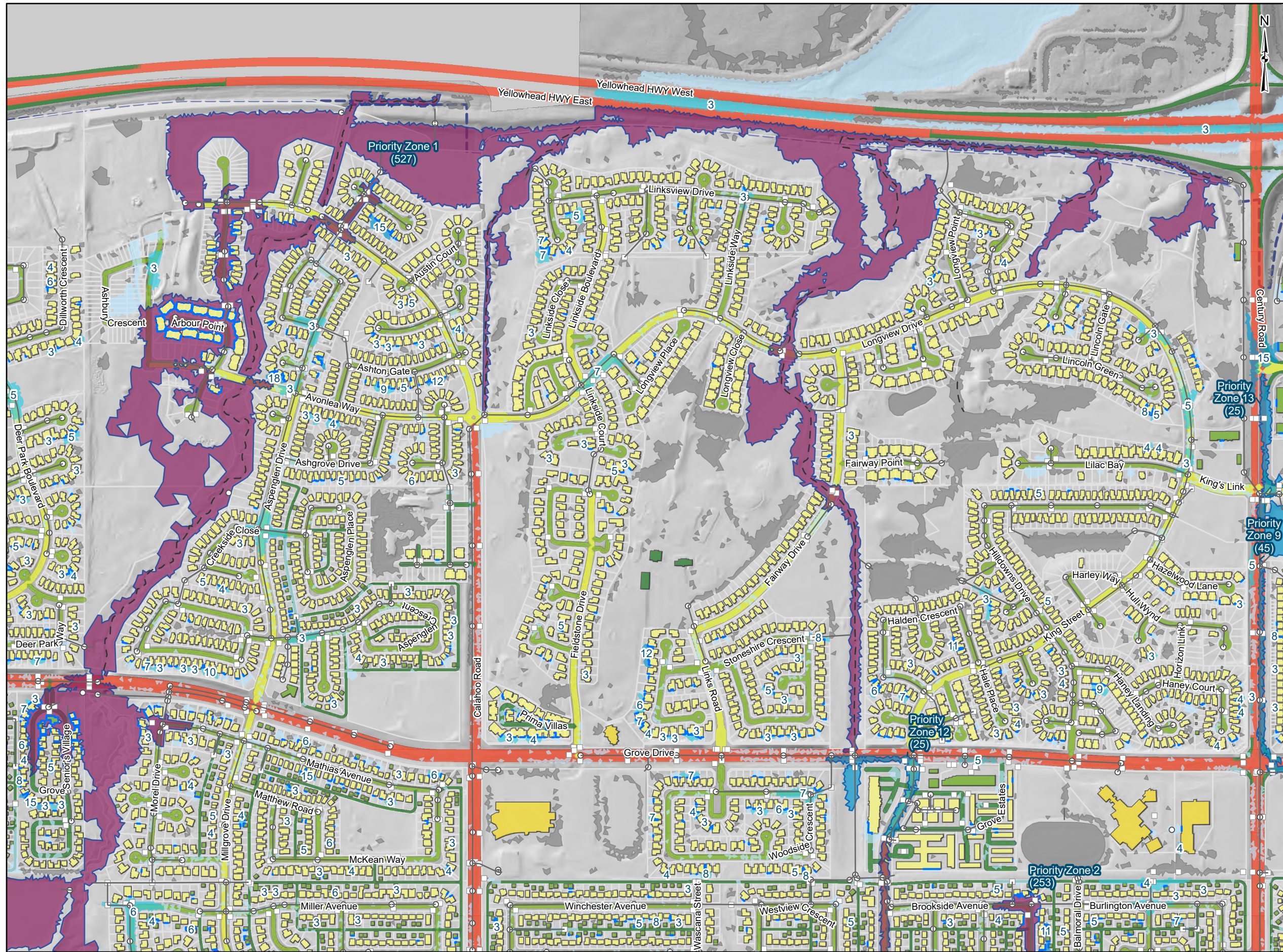
PROJECTION
NAD 1983 3TM 114

0 100 200
1:8,000 Meters

FIGURE	E.1
DATE	2024-02-29
PROJECT NO.	16462
AUTHOR	TDaSilva

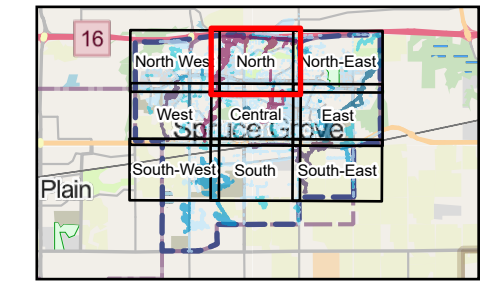


Document: \gwyfz\gis_data\Projects\16611_SpruceGroveFloodRiskAssessment\16611_SpruceGroveFloodRiskAssessment.aprx - 16611_Flood_Risk_Review_Map_Book_11x17_Landscape



LEGEND

- Storm Manholes
 - Storm Catch Basin
 - Storm Main
 - - Storm Ditch
 - Building Flood Encroachment
- Flood Zone Risk Score**
- < 2.0
 - 2.01 - 10.0
 - 10.01 - 50.0
 - 50.01 - 100.0
 - 100.01 - 250.0
 - 250.01 - 550.0
 - 0
- Building Class Score**
- 1 - Lots of greenfield, little population
 - 3 - Commercial/industrial facilities/ Storage
 - 10 - Residential and more critical commercial/institutional
 - 50 - Institutional facilities
 - 200 - Critical facilities
 - 500 - Emergency response
- Transportation Footprint Score**
- 1 - Alleyway, Private, Ramp
 - 2 - Local
 - 3 - Collector
 - 4 - Arterial, Minor Arterial, Major Collector
 - 5 - Highway, Major Arterial, Railway
- Property Parcel
 - Municipal_Boundary



TITLE
FLOOD RISK - NORTH

PROJECT
SPRUCE GROVE STORMWATER MASTER PLAN

CLIENT
THE CITY OF SPRUCE GROVE

DATA SOURCES
- Elevation data captured in 2012
- Map data © OpenStreetMap contributors, Microsoft, Facebook, Inc. and its affiliates, Esri Community Maps contributors, Map layer by Esri

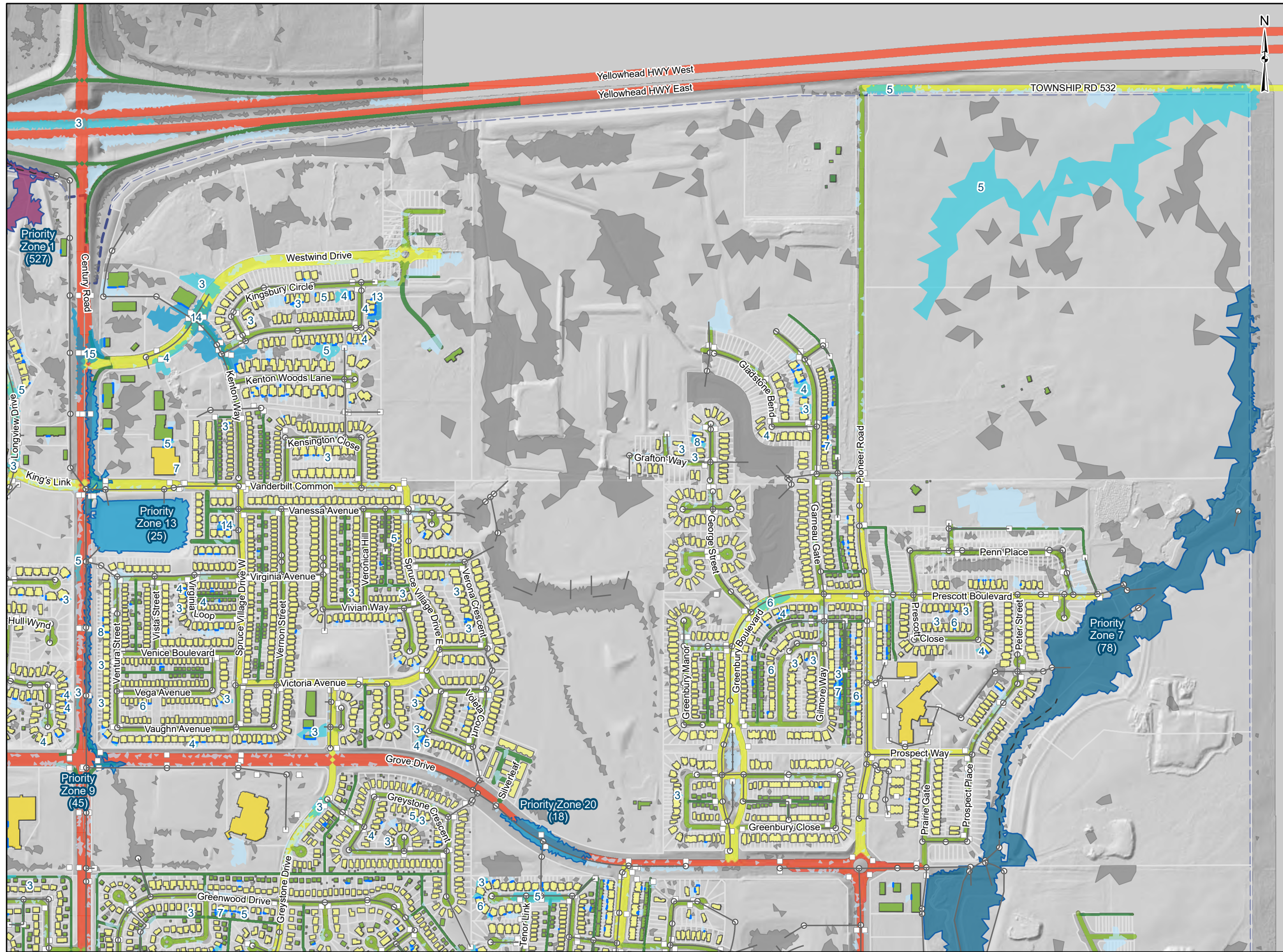
PROJECTION
NAD 1983 3TM 114

0 100 200
1:8,000 Meters

FIGURE	E.2
DATE	2024-02-29
PROJECT NO.	16462
AUTHOR	TDaSilva

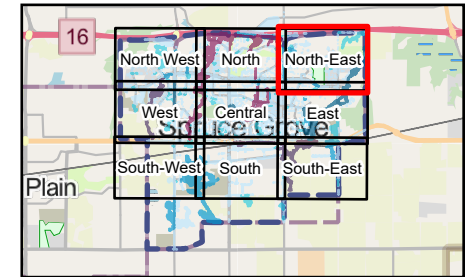


Document: \gwyfz\gis_data\Projects\16611_SpruceGroveFloodRiskAssessment\16611_SpruceGroveFloodRiskAssessment.aprx -- 16611_Flood_Risk_Review_Map_Book_11x17_Landscape



LEGEND

- Storm Manholes
 - Storm Catch Basin
 - Storm Main
 - - Storm Ditch
 - Building Flood Encroachment
- Flood Zone Risk Score**
- < 2.0
 - 2.01 - 10.0
 - 10.01 - 50.0
 - 50.01 - 100.0
 - 100.01 - 250.0
 - 250.01 - 550.0
 - 0
- Building Class Score**
- 1 - Lots of greenfield, little population
 - 3 - Commercial/industrial facilities/ Storage
 - 10 - Residential and more critical commercial/institutional
 - 50 - Institutional facilities
 - 200 - Critical facilities
 - 500 - Emergency response
- Transportation Footprint Score**
- 1 - Alleyway, Private, Ramp
 - 2 - Local
 - 3 - Collector
 - 4 - Arterial, Minor Arterial, Major Collector
 - 5 - Highway, Major Arterial, Railway
- Property Parcel
 - Municipal_Boundary



TITLE
FLOOD RISK - NORTH-EAST

PROJECT
SPRUCE GROVE STORMWATER MASTER PLAN
CLIENT
THE CITY OF SPRUCE GROVE

DATA SOURCES
- Elevation data captured in 2012
- Map data © OpenStreetMap contributors, Microsoft, Facebook, Inc. and its affiliates, Esri Community Maps contributors, Map layer by Esri

PROJECTION
NAD 1983 3TM 114

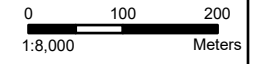
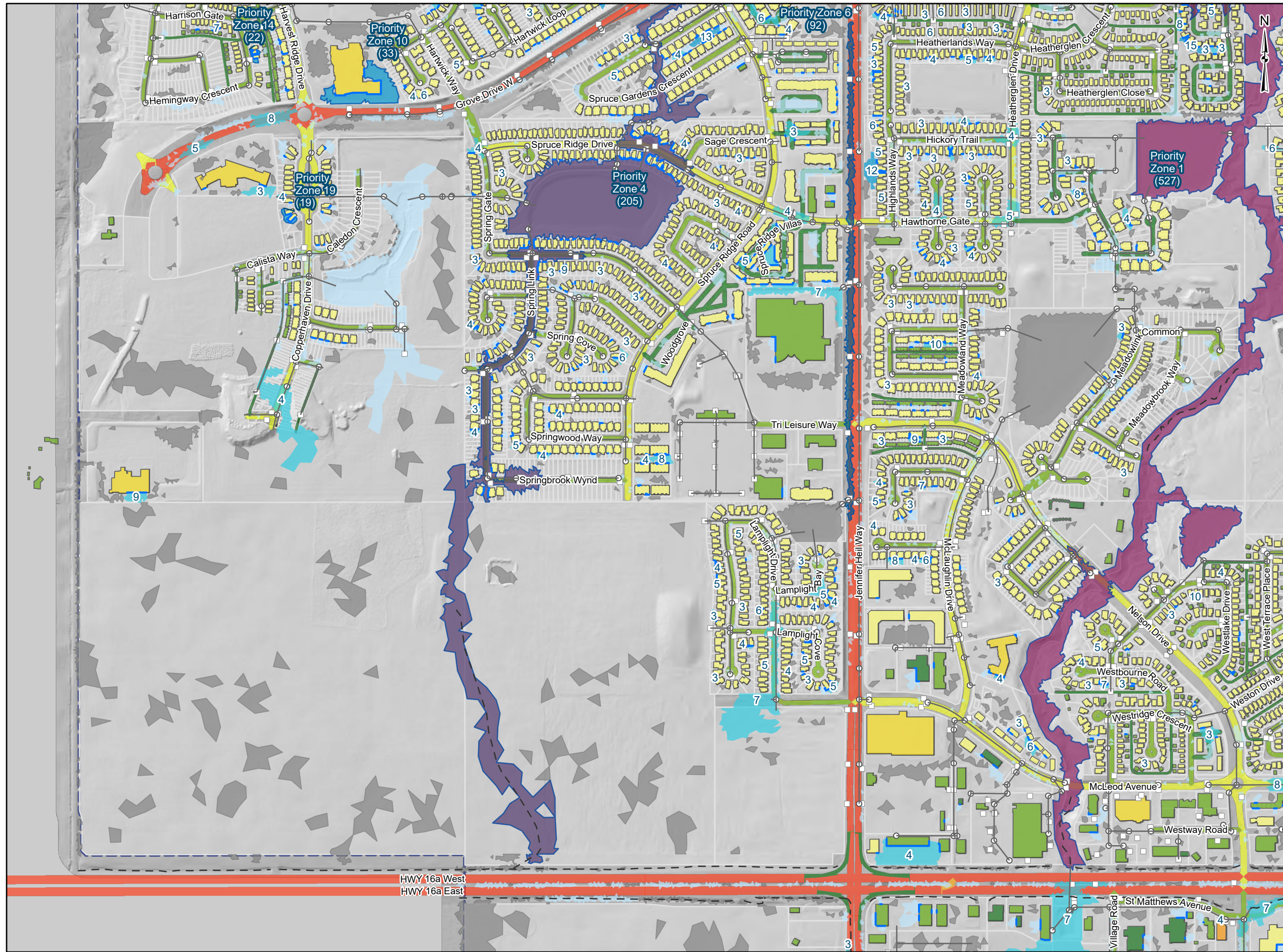


FIGURE	E.3
DATE	2024-02-29
PROJECT NO.	16462
AUTHOR	TDaSilva





LEGEND

- Storm Manholes
- Storm Catch Basin
- Storm Main
- - Storm Ditch
- Building Flood Encroachment

Flood Zone Risk Score

- < 2.0
- 2.01 - 10.0
- 10.01 - 50.0
- 50.01 - 100.0
- 100.01 - 250.0
- 250.01 - 550.0
- 0

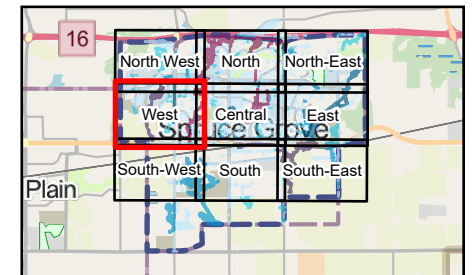
Building Class Score

- 1 - Lots of greenfield, little population
- 3 - Commercial/industrial facilities/ Storage
- 10 - Residential and more critical commercial/institutional
- 50 - Institutional facilities
- 200 - Critical facilities
- 500 - Emergency response

Transportation Footprint Score

- 1 - Alleyway, Private, Ramp
- 2 - Local
- 3 - Collector
- 4 - Arterial, Minor Arterial, Major Collector
- 5 - Highway, Major Arterial, Railway

- Property Parcel
- Municipal_Boundary



TITLE
FLOOD RISK - WEST

PROJECT
SPRUCE GROVE STORMWATER MASTER PLAN

CLIENT
THE CITY OF SPRUCE GROVE

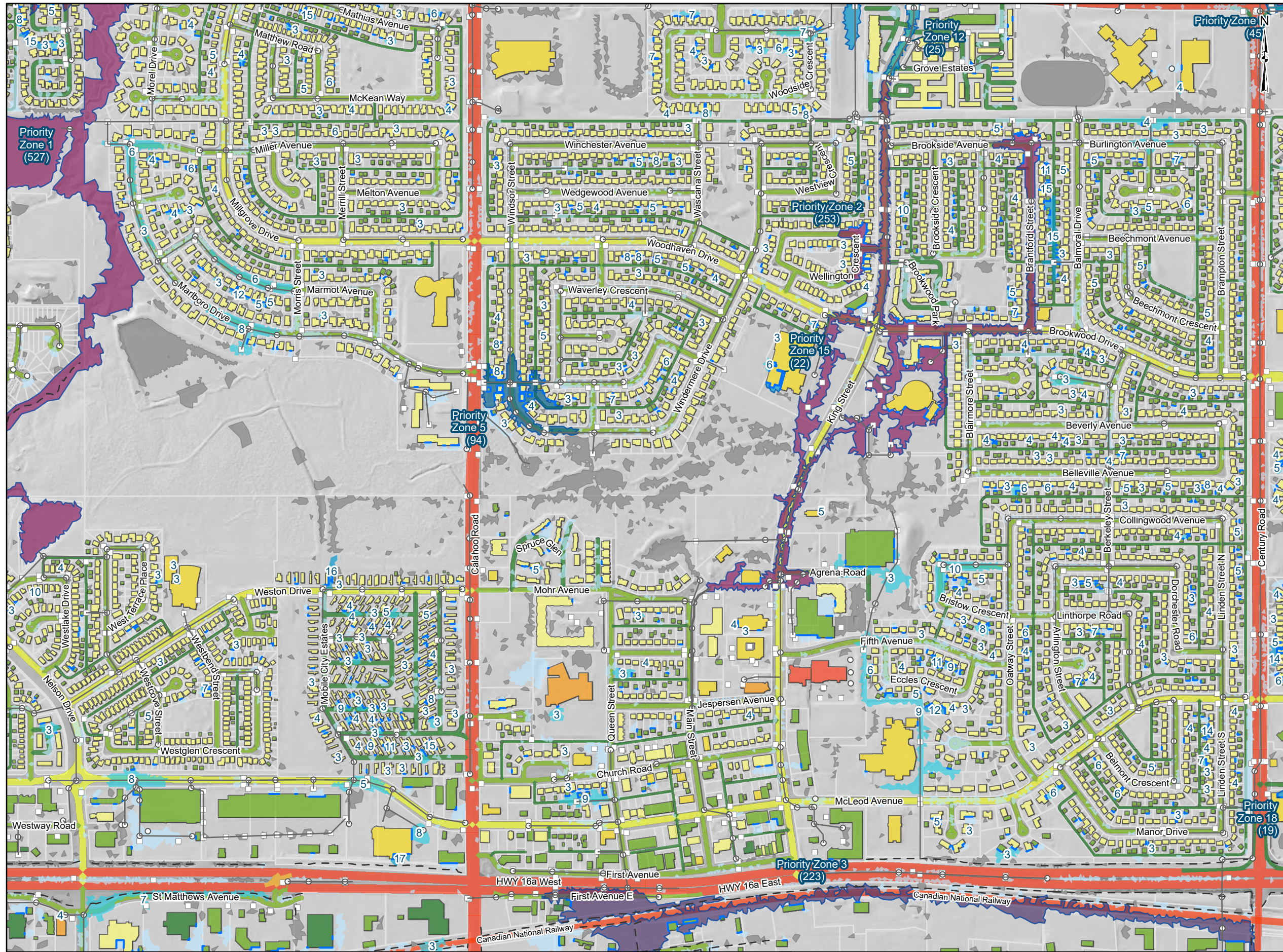
DATA SOURCES
- Elevation data captured in 2012
- Map data © OpenStreetMap contributors, Microsoft, Facebook, Inc. and its affiliates, Esri Community Maps contributors, Map layer by Esri

PROJECTION
NAD 1983 3TM 114

0 100 200
1:8,000 Meters

FIGURE	E.4
DATE	2024-02-29
PROJECT NO.	16462
AUTHOR	TDaSilva





LEGEND

- Storm Manholes
- Storm Catch Basin
- Storm Main
- - Storm Ditch
- Building Flood Encroachment

Flood Zone Risk Score

- < 2.0
- 2.01 - 10.0
- 10.01 - 50.0
- 50.01 - 100.0
- 100.01 - 250.0
- 250.01 - 550.0
- 0

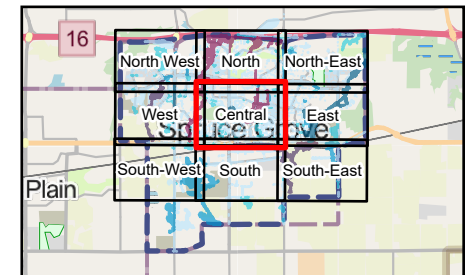
Building Class Score

- 1 - Lots of greenfield, little population
- 3 - Commercial/industrial facilities/ Storage
- 10 - Residential and more critical commercial/institutional
- 50 - Institutional facilities
- 200 - Critical facilities
- 500 - Emergency response

Transportation Footprint Score

- 1 - Alleyway, Private, Ramp
- 2 - Local
- 3 - Collector
- 4 - Arterial, Minor Arterial, Major Collector
- 5 - Highway, Major Arterial, Railway

- Property Parcel
- Municipal_Boundary



TITLE
FLOOD RISK - CENTRAL

PROJECT
SPRUCE GROVE STORMWATER MASTER PLAN
CLIENT
THE CITY OF SPRUCE GROVE

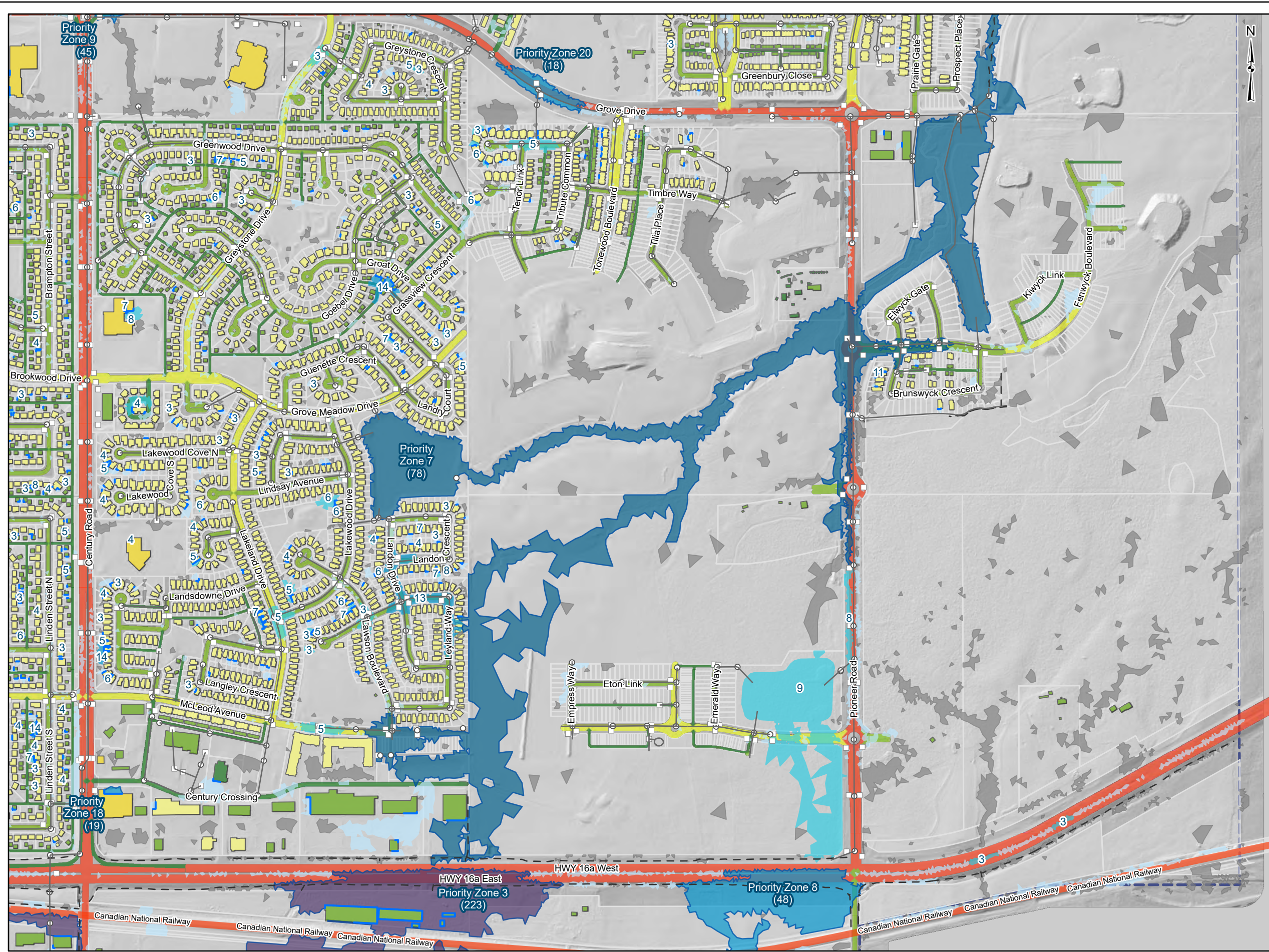
DATA SOURCES
- Elevation data captured in 2012
- Map data © OpenStreetMap contributors, Microsoft, Facebook, Inc. and its affiliates, Esri Community Maps contributors, Map layer by Esri

PROJECTION
NAD 1983 3TM 114
SCALE
1:8,000

FIGURE	E.5
DATE	2024-02-29
PROJECT NO.	16462
AUTHOR	TDaSilva

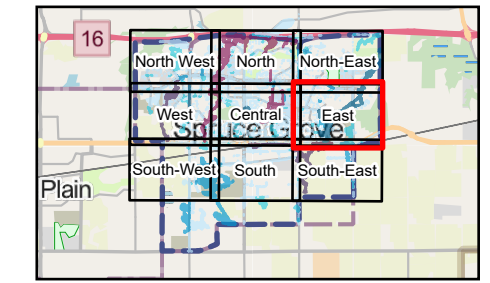


Document: \gwyfz\gis_data\Projects\16611_SpruceGroveFloodRiskAssessment\16611_SpruceGroveFloodRiskAssessment.aprx -- 16611_Flood_Risk_Review_Map_Book_11x17_landscape



LEGEND

- Storm Manholes
 - Storm Catch Basin
 - Storm Main
 - - Storm Ditch
 - Building Flood Encroachment
- Flood Zone Risk Score
- < 2.0
 - 2.01 - 10.0
 - 10.01 - 50.0
 - 50.01 - 100.0
 - 100.01 - 250.0
 - 250.01 - 550.0
 - 0
- Building Class Score
- 1 - Lots of greenfield, little population
 - 3 - Commercial/industrial facilities/ Storage
 - 10 - Residential and more critical commercial/institutional
 - 50 - Institutional facilities
 - 200 - Critical facilities
 - 500 - Emergency response
- Transportation Footprint Score
- 1 - Alleyway, Private, Ramp
 - 2 - Local
 - 3 - Collector
 - 4 - Arterial, Minor Arterial, Major Collector
 - 5 - Highway, Major Arterial, Railway
- Property Parcel
 - Municipal_Boundary



TITLE
FLOOD RISK - EAST

PROJECT
SPRUCE GROVE STORMWATER MASTER PLAN
CLIENT
THE CITY OF SPRUCE GROVE

DATA SOURCES
- Elevation data captured in 2012
- Map data © OpenStreetMap contributors, Microsoft, Facebook, Inc. and its affiliates, Esri Community Maps contributors, Map layer by Esri

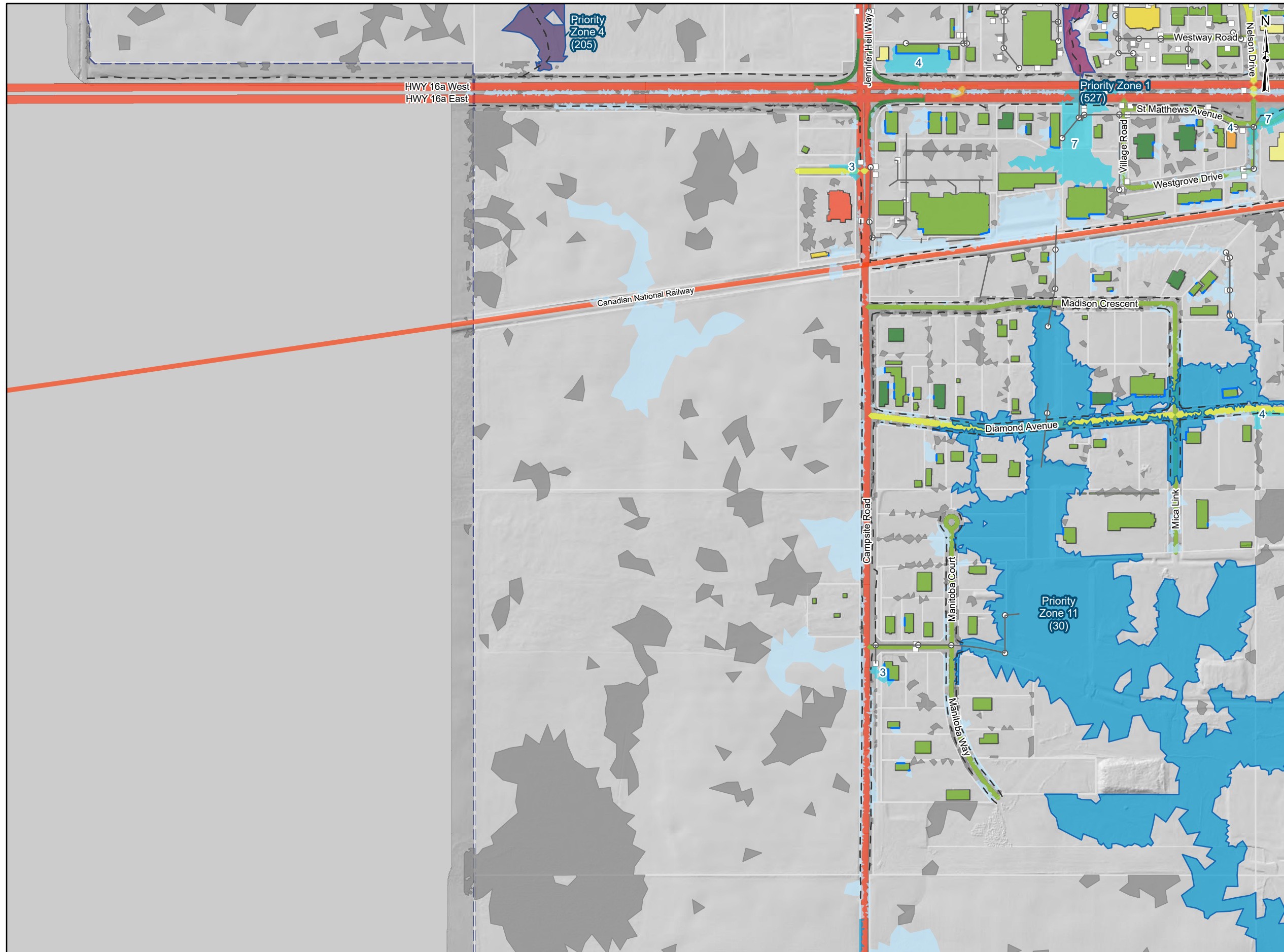
PROJECTION
NAD 1983 3TM 114

0 100 200
1:8,000 Meters

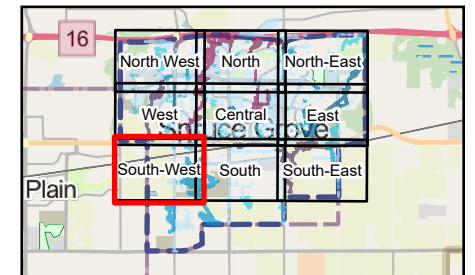
FIGURE	E.6
DATE	2024-02-29
PROJECT NO.	16462
AUTHOR	TDaSilva



Document: \\gys2\gis_data\Projects\16611_SpruceGroveFloodRiskAssessment\16611_SpruceGroveFloodRiskAssessment.aprx -- 16611_Flood_Risk_Review_Map_Book_11x17_landscape



- LEGEND**
- Storm Manholes
 - Storm Catch Basin
 - Storm Main
 - - - Storm Ditch
 - Building Flood Encroachment
- Flood Zone Risk Score**
- < 2.0
 - 2.01 - 10.0
 - 10.01 - 50.0
 - 50.01 - 100.0
 - 100.01 - 250.0
 - 250.01 - 550.0
 - 0
- Building Class Score**
- 1 - Lots of greenfield, little population
 - 3 - Commercial/industrial facilities/ Storage
 - 10 - Residential and more critical commercial/institutional
 - 50 - Institutional facilities
 - 200 - Critical facilities
 - 500 - Emergency response
- Transportation Footprint Score**
- 1 - Alleyway, Private, Ramp
 - 2 - Local
 - 3 - Collector
 - 4 - Arterial, Minor Arterial, Major Collector
 - 5 - Highway, Major Arterial, Railway
- Property Parcel
 - Municipal_Boundary



TITLE
FLOOD RISK - SOUTH-WEST

PROJECT
SPRUCE GROVE STORMWATER MASTER PLAN

CLIENT
THE CITY OF SPRUCE GROVE

DATA SOURCES
- Elevation data captured in 2012
- Map data © OpenStreetMap contributors, Microsoft, Facebook, Inc. and its affiliates, Esri Community Maps contributors, Map layer by Esri

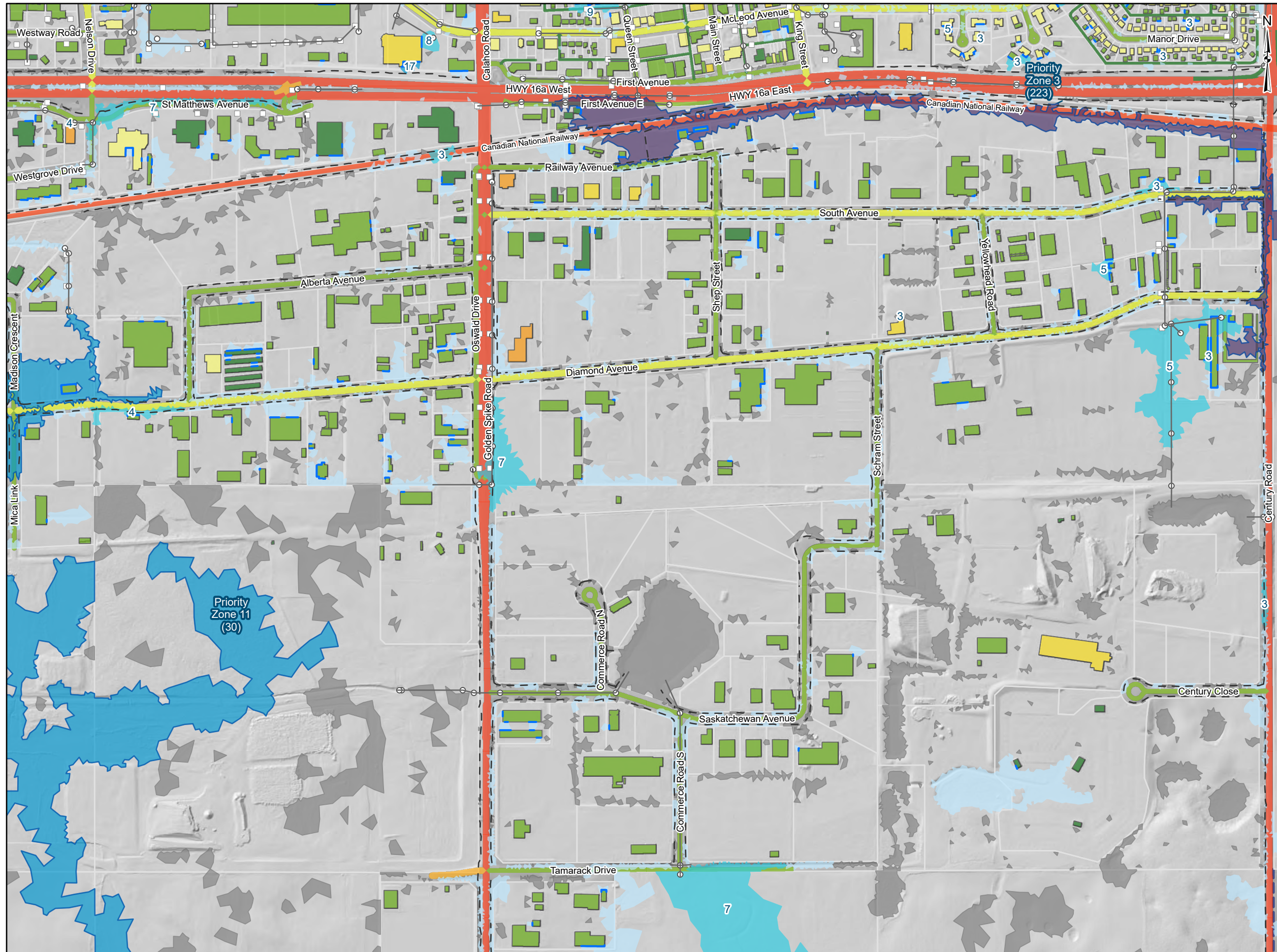
PROJECTION
NAD 1983 3TM 114

0 100 200
1:8,000 Meters

FIGURE	E.7
DATE	2024-02-29
PROJECT NO.	16462
AUTHOR	TDaSilva

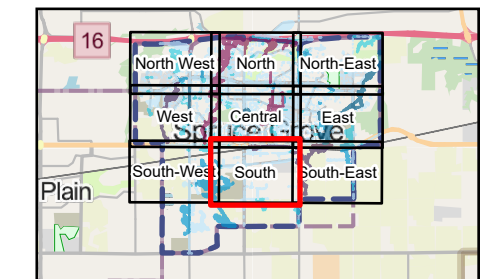


Document: \gfyfz\gis_data\Projects\16611_SpruceGroveFloodRiskAssessment\16611_SpruceGroveFloodRiskAssessment.aprx - 16611_Flood_Risk_Review_Map_Book_11x17_Landscape



LEGEND

- Storm Manholes
 - Storm Catch Basin
 - Storm Main
 - - - Storm Ditch
 - Building Flood Encroachment
- Flood Zone Risk Score
- < 2.0
 - 2.01 - 10.0
 - 10.01 - 50.0
 - 50.01 - 100.0
 - 100.01 - 250.0
 - 250.01 - 550.0
 - 0
- Building Class Score
- 1 - Lots of greenfield, little population
 - 3 - Commercial/industrial facilities/ Storage
 - 10 - Residential and more critical commercial/institutional
 - 50 - Institutional facilities
 - 200 - Critical facilities
 - 500 - Emergency response
- Transportation Footprint Score
- 1 - Alleyway, Private, Ramp
 - 2 - Local
 - 3 - Collector
 - 4 - Arterial, Minor Arterial, Major Collector
 - 5 - Highway, Major Arterial, Railway
 - Property Parcel
 - Municipal_Boundary



TITLE
FLOOD RISK - SOUTH

PROJECT
SPRUCE GROVE STORMWATER MASTER PLAN

CLIENT
THE CITY OF SPRUCE GROVE

DATA SOURCES
- Elevation data captured in 2012
- Map data © OpenStreetMap contributors, Microsoft, Facebook, Inc. and its affiliates, Esri Community Maps contributors, Map layer by Esri

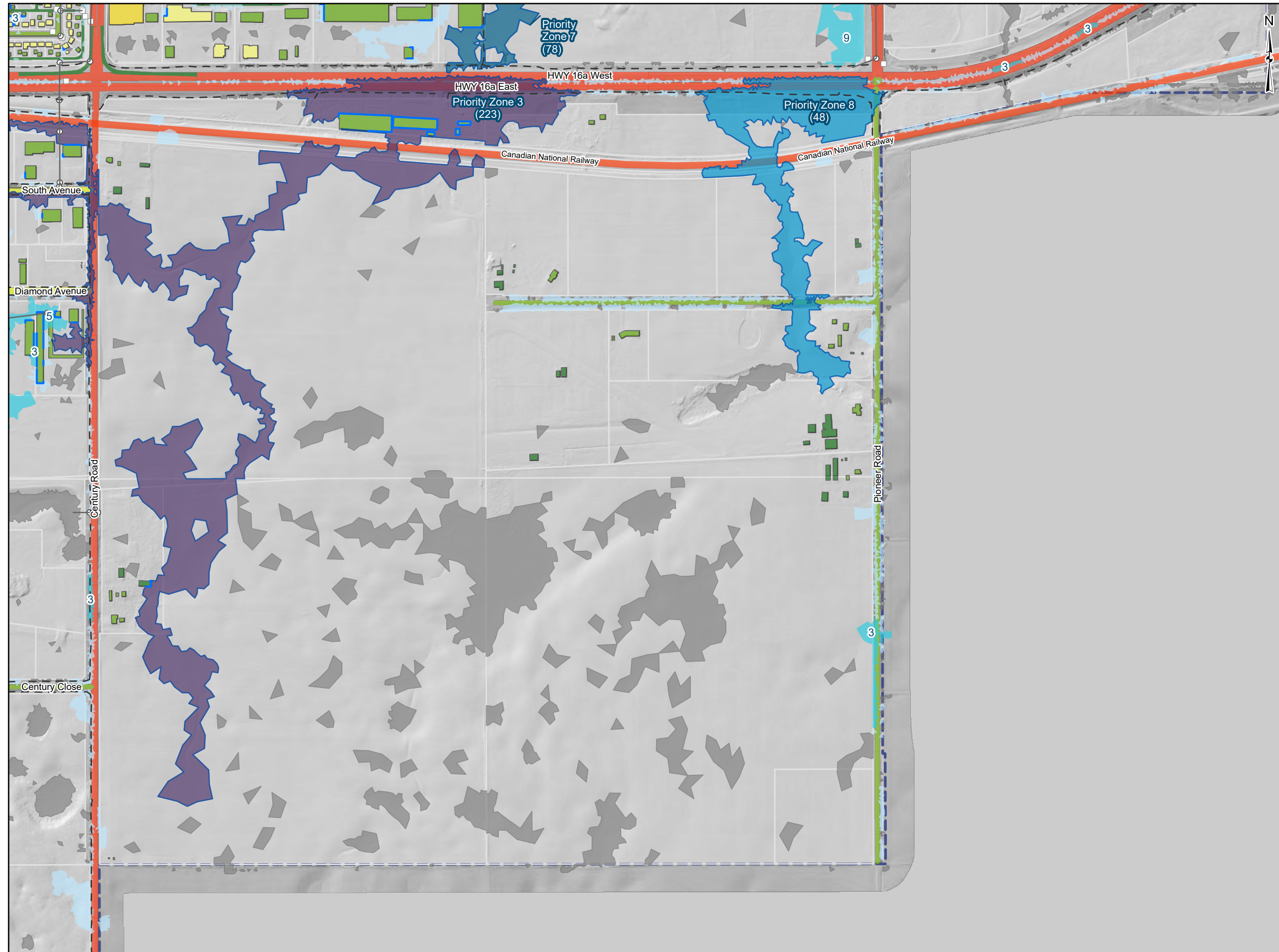
PROJECTION
NAD 1983 3TM 114

0 100 200
1:8,000 Meters

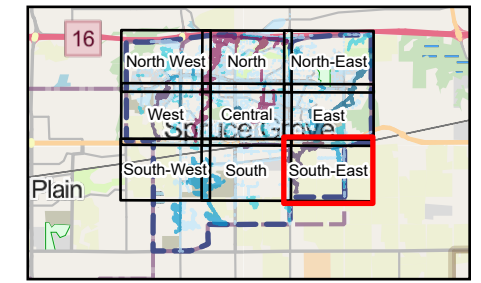
FIGURE	E.8
DATE	2024-02-29
PROJECT NO.	16462
AUTHOR	TDaSilva



Document: \\gys2\gis_data\Projects\16611_SpruceGroveFloodRiskAssessment\16611_SpruceGroveFloodRiskAssessment.aprx - 16611_Flood_Risk_Review_Map_Book_11x17_landscap



- LEGEND**
- Storm Manholes
 - Storm Catch Basin
 - Storm Main
 - - Storm Ditch
 - Building Flood Encroachment
- Flood Zone Risk Score**
- < 2.0
 - 2.01 - 10.0
 - 10.01 - 50.0
 - 50.01 - 100.0
 - 100.01 - 250.0
 - 250.01 - 550.0
 - 0
- Building Class Score**
- 1 - Lots of greenfield, little population
 - 3 - Commercial/industrial facilities/ Storage
 - 10 - Residential and more critical commercial/institutional
 - 50 - Institutional facilities
 - 200 - Critical facilities
 - 500 - Emergency response
- Transportation Footprint Score**
- 1 - Alleyway, Private, Ramp
 - 2 - Local
 - 3 - Collector
 - 4 - Arterial, Minor Arterial, Major Collector
 - 5 - Highway, Major Arterial, Railway
- Property Parcel
 - Municipal_Boundary



TITLE
FLOOD RISK - SOUTH-EAST

PROJECT
SPRUCE GROVE STORMWATER MASTER PLAN

CLIENT
THE CITY OF SPRUCE GROVE

DATA SOURCES
- Elevation data captured in 2012
- Map data © OpenStreetMap contributors, Microsoft, Facebook, Inc. and its affiliates, Esri Community Maps contributors, Map layer by Esri

PROJECTION
NAD 1983 3TM 114

0 100 200
1:8,000 Meters

FIGURE	E.9
DATE	2024-02-29
PROJECT NO.	16462
AUTHOR	TDaSilva

