



APPENDIX
Stormwater Network Database

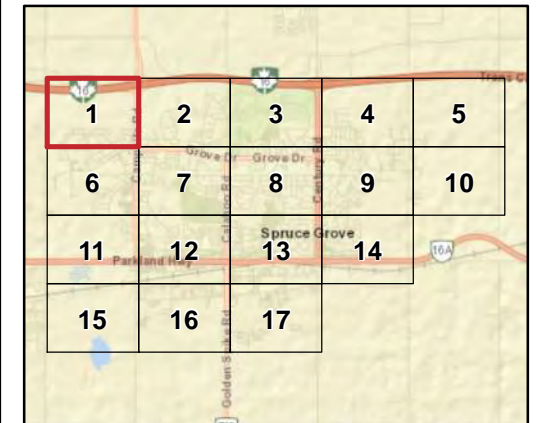
A



LEGEND

- Sewer Size**
- Unknown
 - ≤ 250 mm
 - 300 mm
 - 375 mm
 - 450 mm
 - 525 mm
 - 600 mm
 - ≥ 675 mm
- Culvert Size**
- Unknown
 - ≤ 250 mm
 - 300 mm
 - 375 mm
 - 450 mm
 - 525 mm
 - 600 mm
 - ≥ 675 mm
- Manholes
 ▲ Catch Basin
 — Catch Basin Leads
 SWMF
 — Contours (2.5 m)
 — Contours (0.5 m)

Diameters are labelled in mm for sewers greater than 600 mm



TITLE
**EXISTING STORMWATER GIS DATABASE
 STORM SEWER AND CULVERT DIAMETER**

PROJECT
 SPRUCE GROVE STORMWATER MASTER PLAN
 CLIENT
 THE CITY OF SPRUCE GROVE

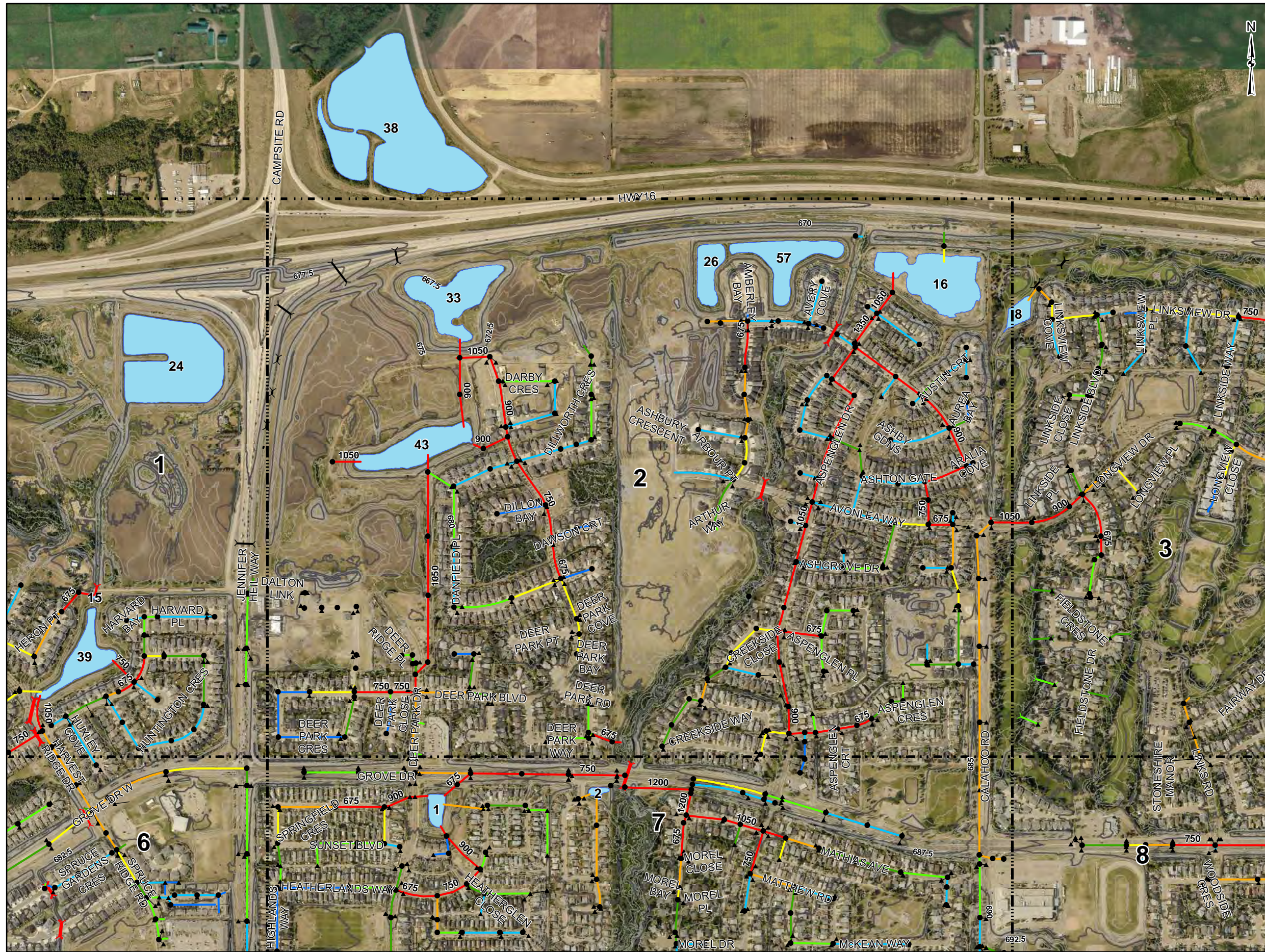
DATA SOURCES
 - Topographic Map: Sources: Esri, HERE, Garmin, USGS, Intermap, INCREMENT P, NRCan, Esri Japan, METI, Esri China (Hong Kong), Esri Korea, Esri (Thailand), NGCC, (c) OpenStreetMap contributors, and the GIS User Community
 Source: Esri, Maxar, Earthstar Geographics, and the GIS User Community

PROJECTION
 NAD 1983 CSRS 3TM 114
 0 60 120 240
 1:8,500 Meters



FIGURE A.1
 DATE 2024-05-27
 PROJECT NO. 16462
 AUTHOR JS

Document Path: M:\erom\GIS\16462 - Spruce Grove Stormwater Master Plan\01_GIS\16462 - Map Book A - Storm Sewer Diameters.mxd



LEGEND

- Sewer Size**
- Unknown
 - ≤ 250 mm
 - 300 mm
 - 375 mm
 - 450 mm
 - 525 mm
 - 600 mm
 - ≥ 675 mm
- Culvert Size**
- Unknown
 - ≤ 250 mm
 - 300 mm
 - 375 mm
 - 450 mm
 - 525 mm
 - 600 mm
 - ≥ 675 mm
- Manholes
 ▲ Catch Basin
 — Catch Basin Leads
 ■ SWMF
 — Contours (2.5 m)
 — Contours (0.5 m)

Diameters are labelled in mm for sewers greater than 600 mm

1	2	3	4	5
6	7	8	9	10
11	12	13	14	15A
15	16	17		

TITLE
**EXISTING STORMWATER GIS DATABASE
 STORM SEWER AND CULVERT DIAMETER**

PROJECT
 SPRUCE GROVE STORMWATER MASTER PLAN
 CLIENT
 THE CITY OF SPRUCE GROVE

DATA SOURCES
 - Topographic Map: Sources: Esri, HERE, Garmin, USGS, Intermap, INCREMENT P, NRCan, Esri Japan, METI, Esri China (Hong Kong), Esri Korea, Esri (Thailand), NGCC, (c) OpenStreetMap contributors, and the GIS User Community
 Source: Esri, Maxar, Earthstar Geographics, and the GIS User Community

PROJECTION
 NAD 1983 CSRS 3TM 114
 0 60 120 240
 1:8,500 Meters



FIGURE A.2
 DATE 2024-05-27
 PROJECT NO. 16462
 AUTHOR JS



- LEGEND**
- Unknown
 - ≤ 250 mm
 - 300 mm
 - 375 mm
 - 450 mm
 - 525 mm
 - 600 mm
 - ≥ 675 mm
 - Manholes
 - ▲ Catch Basin
 - Catch Basin Leads
 - SWMF
 - Contours (2.5 m)
 - Contours (0.5 m)

- Culvert Size**
- Unknown
 - ≤ 250 mm
 - 300 mm
 - 375 mm
 - 450 mm
 - 525 mm
 - 600 mm
 - ≥ 675 mm
- Diameters are labelled in mm for sewers greater than 600 mm

1	2	3	4	5
6	7	8	9	10
11	12	13	14	15
16	17			

TITLE
**EXISTING STORMWATER GIS DATABASE
 STORM SEWER AND CULVERT DIAMETER**

PROJECT
 SPRUCE GROVE STORMWATER MASTER PLAN
 CLIENT
 THE CITY OF SPRUCE GROVE

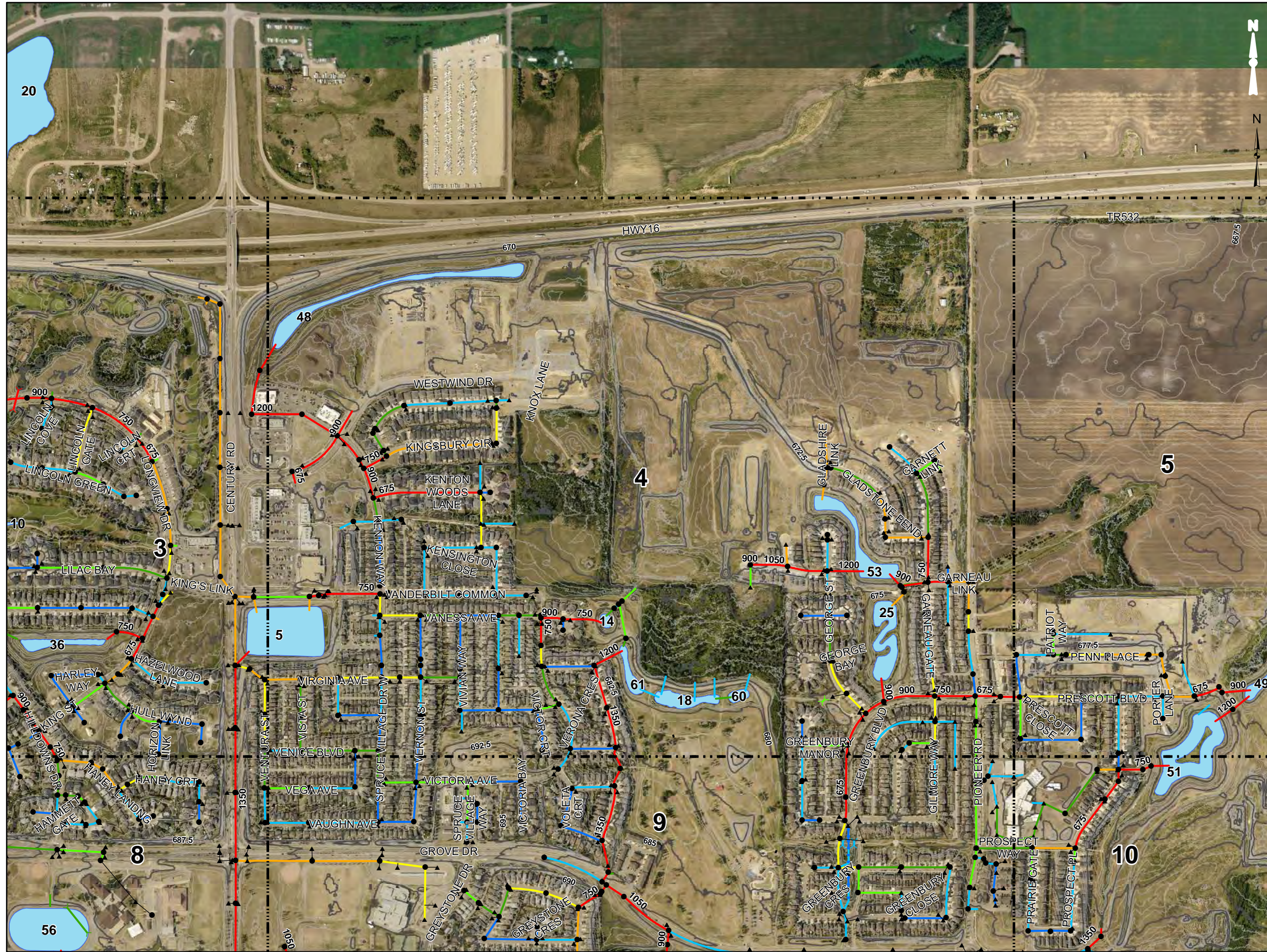
DATA SOURCES
 - Topographic Map: Sources: Esri, HERE, Garmin, USGS, Intermap, INCREMENT P, NRCan, Esri Japan, METI, Esri China (Hong Kong), Esri Korea, Esri (Thailand), NGCC, (c) OpenStreetMap contributors, and the GIS User Community
 Source: Esri, Maxar, Earthstar Geographics, and the GIS User Community

PROJECTION
 NAD 1983 CSRS 3TM 114

0 60 120 240
 1:8,500 Meters

FIGURE A.3
 DATE 2024-05-27
 PROJECT NO. 16462
 AUTHOR JS





- LEGEND**
- Unknown
 - ≤ 250 mm
 - 300 mm
 - 375 mm
 - 450 mm
 - 525 mm
 - 600 mm
 - ≥ 675 mm
 - Manholes
 - ▲ Catch Basin
 - Catch Basin Leads
 - SWMF
 - Contours (2.5 m)
 - Contours (0.5 m)

- Culvert Size**
- Unknown
 - ≤ 250 mm
 - 300 mm
 - 375 mm
 - 450 mm
 - 525 mm
 - 600 mm
 - ≥ 675 mm
- Diameters are labelled in mm for sewers greater than 600 mm

1	2	3	4	5
6	7	8	9	10
11	12	13	14	15
16	17			

TITLE
**EXISTING STORMWATER GIS DATABASE
 STORM SEWER AND CULVERT DIAMETER**

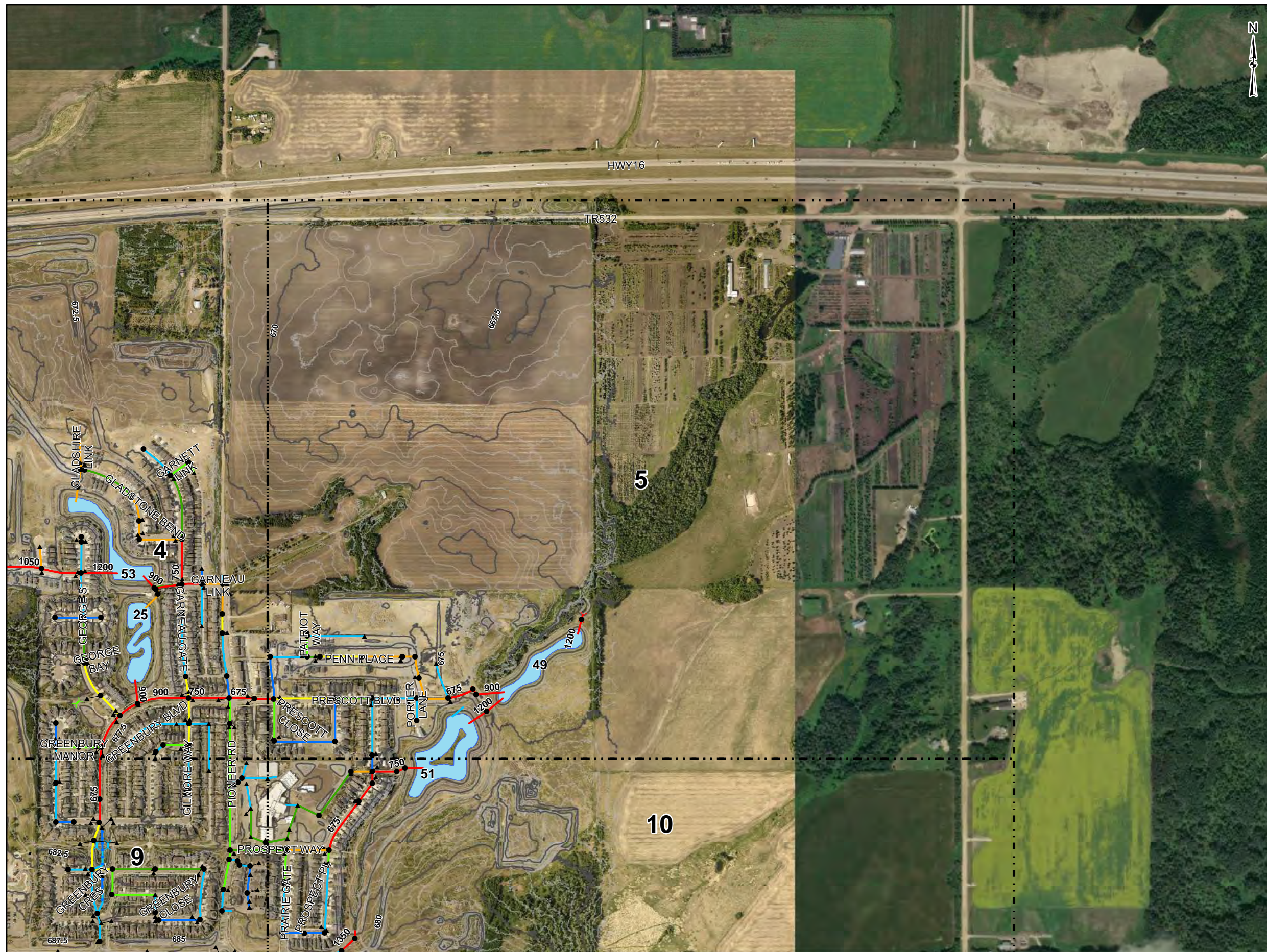
PROJECT
 SPRUCE GROVE STORMWATER MASTER PLAN
 CLIENT
 THE CITY OF SPRUCE GROVE

DATA SOURCES
 - Topographic Map: Sources: Esri, HERE, Garmin, USGS, Intermap, INCREMENT P, NRCan, Esri Japan, METI, Esri China (Hong Kong), Esri Korea, Esri (Thailand), NGCC, (c) OpenStreetMap contributors, and the GIS User Community
 Source: Esri, Maxar, Earthstar Geographics, and the GIS User Community

PROJECTION
 NAD 1983 CSRS 3TM 114
 0 60 120 240
 1:8,500 Meters

ISL
 FIGURE A.4
 DATE 2024-05-27
 PROJECT NO. 16462
 AUTHOR JS

Document Path: M:\eremj\16462 - Spruce Grove Stormwater Master Plan\01_GIS\16462 - Map Book A - Storm Sewer Diameters.mxd



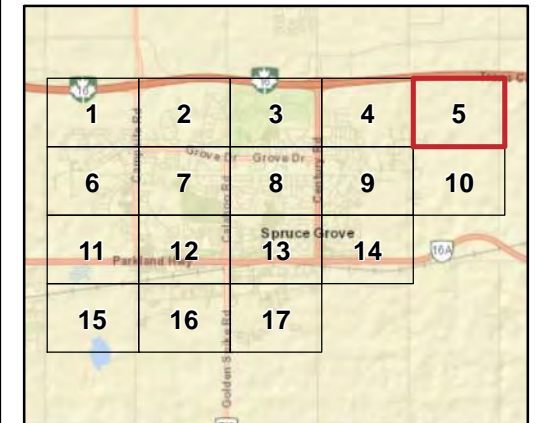
LEGEND

- Sewer Size**
- Unknown
 - ≤ 250 mm
 - 300 mm
 - 375 mm
 - 450 mm
 - 525 mm
 - 600 mm
 - ≥ 675 mm
- Manholes
 - ▲ Catch Basin
 - Catch Basin Leads
 - SWMF
 - Contours (2.5 m)
 - Contours (0.5 m)

Culvert Size

- Unknown
- ≤ 250 mm
- 300 mm
- 375 mm
- 450 mm
- 525 mm
- 600 mm
- ≥ 675 mm

Diameters are labelled in mm for sewers greater than 600 mm



**EXISTING STORMWATER GIS DATABASE
STORM SEWER AND CULVERT DIAMETER**

PROJECT: SPRUCE GROVE STORMWATER MASTER PLAN
CLIENT: THE CITY OF SPRUCE GROVE

DATA SOURCES: Topographic Map: Sources: Esri, HERE, Garmin, USGS, Intermap, INCREMENT P, NRCan, Esri Japan, METI, Esri China (Hong Kong), Esri Korea, Esri (Thailand), NGCC, (c) OpenStreetMap contributors, and the GIS User Community
Source: Esri, Maxar, Earthstar Geographics, and the GIS User Community

PROJECTION: NAD 1983 CSRS 3TM 114
Scale: 1:8,500



FIGURE: A.5
DATE: 2024-05-27
PROJECT NO.: 16462
AUTHOR: JS



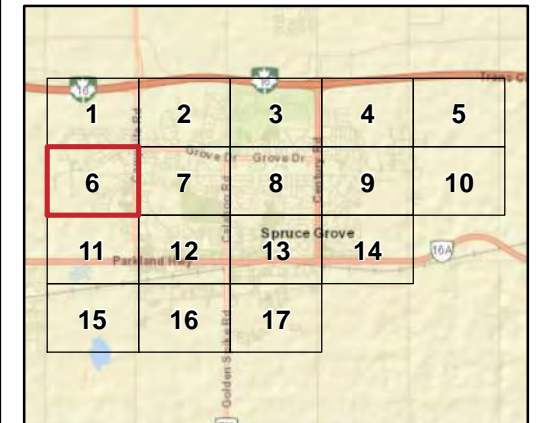
LEGEND

- Sewer Size**
- Unknown
 - ≤ 250 mm
 - 300 mm
 - 375 mm
 - 450 mm
 - 525 mm
 - 600 mm
 - ≥ 675 mm
- Manholes
 - ▲ Catch Basin
 - Catch Basin Leads
 - SWMF
 - Contours (2.5 m)
 - Contours (0.5 m)

Culvert Size

- Unknown
- ≤ 250 mm
- 300 mm
- 375 mm
- 450 mm
- 525 mm
- 600 mm
- ≥ 675 mm

Diameters are labelled in mm for sewers greater than 600 mm



TITLE
EXISTING STORMWATER GIS DATABASE
STORM SEWER AND CULVERT DIAMETER

PROJECT
 SPRUCE GROVE STORMWATER MASTER PLAN
CLIENT
 THE CITY OF SPRUCE GROVE

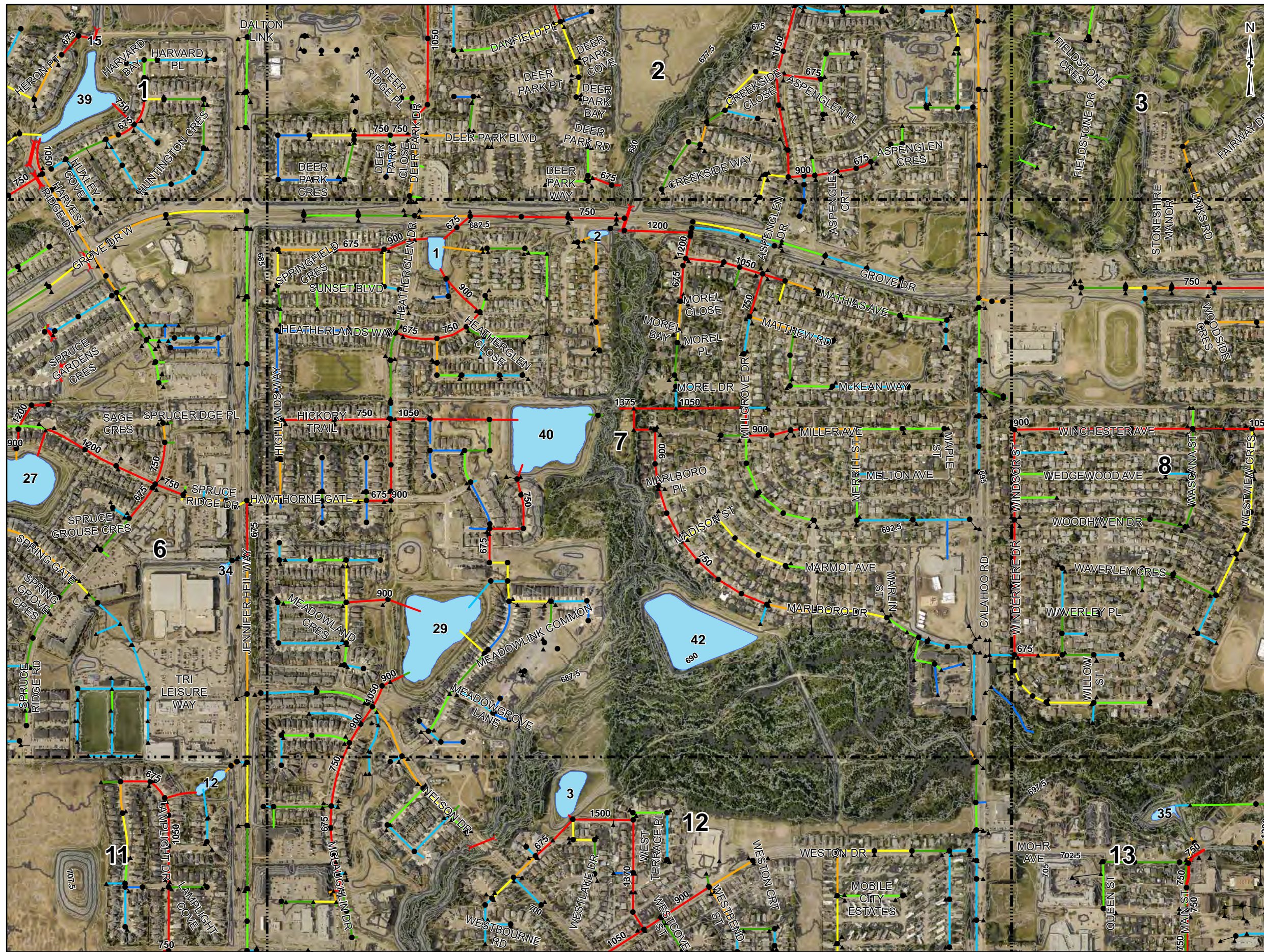
DATA SOURCES
 - Topographic Map: Sources: Esri, HERE, Garmin, USGS, Intermap, INCREMENT P, NRCan, Esri Japan, METI, Esri China (Hong Kong), Esri Korea, Esri (Thailand), NGCC, (c) OpenStreetMap contributors, and the GIS User Community
 Source: Esri, Maxar, Earthstar Geographics, and the GIS User Community

PROJECTION
 NAD 1983 CSRS 3TM 114

0 60 120 240
 1:8,500 Meters

FIGURE A.6
DATE 2024-05-27
PROJECT NO. 16462
AUTHOR JS

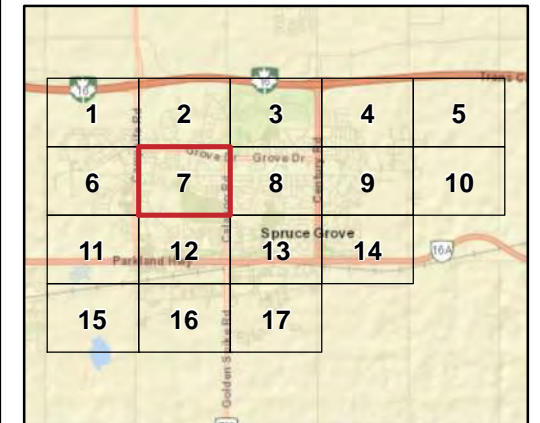




LEGEND

- Sewer Size**
- Unknown
 - ≤ 250 mm
 - 300 mm
 - 375 mm
 - 450 mm
 - 525 mm
 - 600 mm
 - ≥ 675 mm
- Culvert Size**
- Unknown
 - ≤ 250 mm
 - 300 mm
 - 375 mm
 - 450 mm
 - 525 mm
 - 600 mm
 - ≥ 675 mm
- Manholes
 - ▲ Catch Basin
 - Catch Basin Leads
 - SWMF
 - Contours (2.5 m)
 - Contours (0.5 m)

Diameters are labelled in mm for sewers greater than 600 mm



TITLE
**EXISTING STORMWATER GIS DATABASE
STORM SEWER AND CULVERT DIAMETER**

PROJECT
SPRUCE GROVE STORMWATER MASTER PLAN
CLIENT
THE CITY OF SPRUCE GROVE

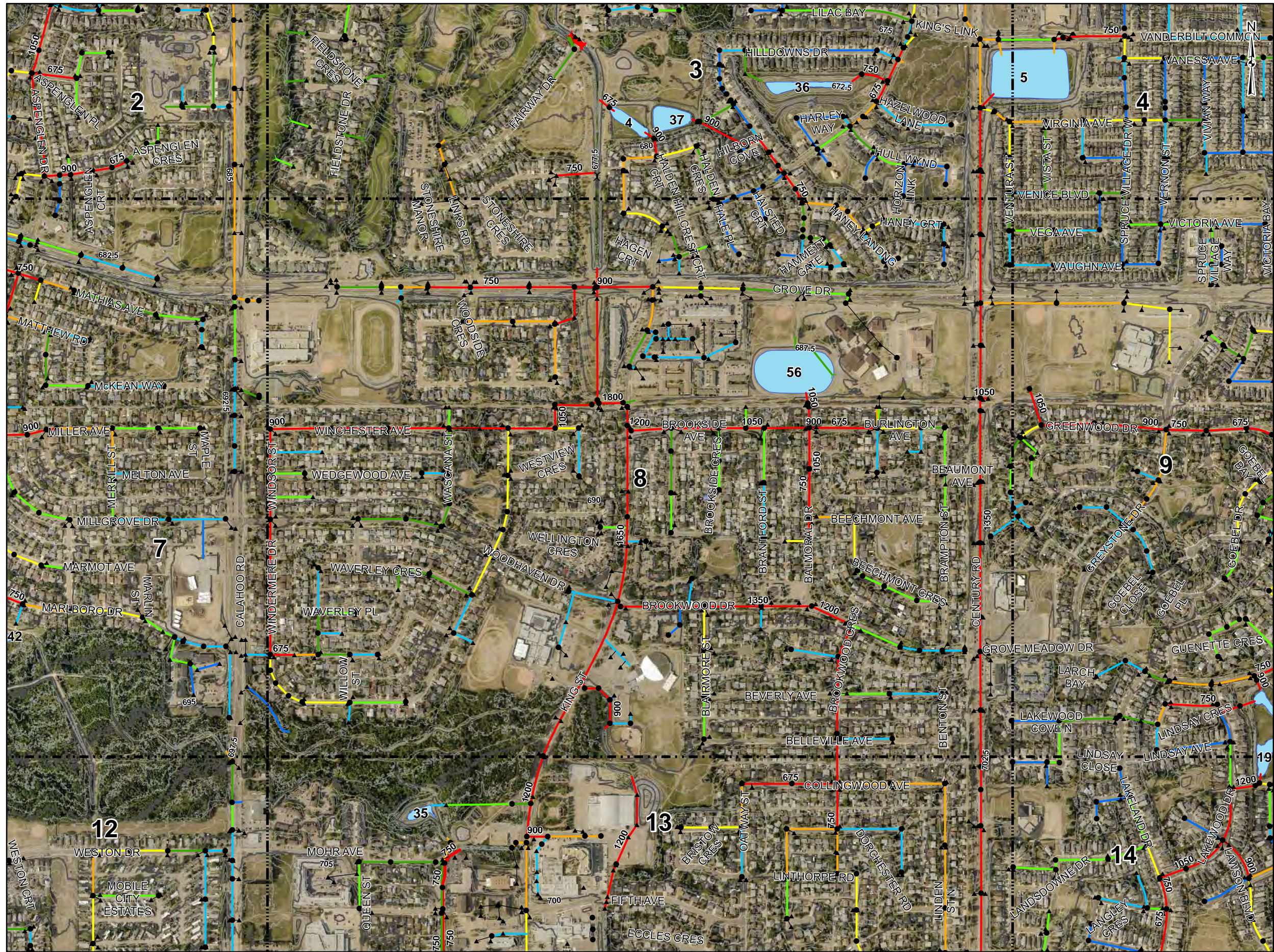
DATA SOURCES
- Topographic Map: Sources: Esri, HERE, Garmin, USGS, Intermap, INCREMENT P, NRCan, Esri Japan, METI, Esri China (Hong Kong), Esri Korea, Esri (Thailand), NGCC, (c) OpenStreetMap contributors, and the GIS User Community
Source: Esri, Maxar, Earthstar Geographics, and the GIS User Community

PROJECTION
NAD 1983 CSRS 3TM 114

0 60 120 240
1:8,500 Meters

FIGURE A.7
DATE 2024-05-27
PROJECT NO. 16462
AUTHOR JS





LEGEND

- Sewer Size**
- Unknown
 - ≤ 250 mm
 - 300 mm
 - 375 mm
 - 450 mm
 - 525 mm
 - 600 mm
 - ≥ 675 mm
- Culvert Size**
- Unknown
 - ≤ 250 mm
 - 300 mm
 - 375 mm
 - 450 mm
 - 525 mm
 - 600 mm
 - ≥ 675 mm
- Manholes
 ▲ Catch Basin
 — Catch Basin Leads
 ■ SWMF
 — Contours (2.5 m)
 - - - Contours (0.5 m)

Diameters are labelled in mm for sewers greater than 600 mm

1	2	3	4	5
6	7	8	9	10
11	12	13	14	15
15	16	17		

TITLE
**EXISTING STORMWATER GIS DATABASE
 STORM SEWER AND CULVERT DIAMETER**

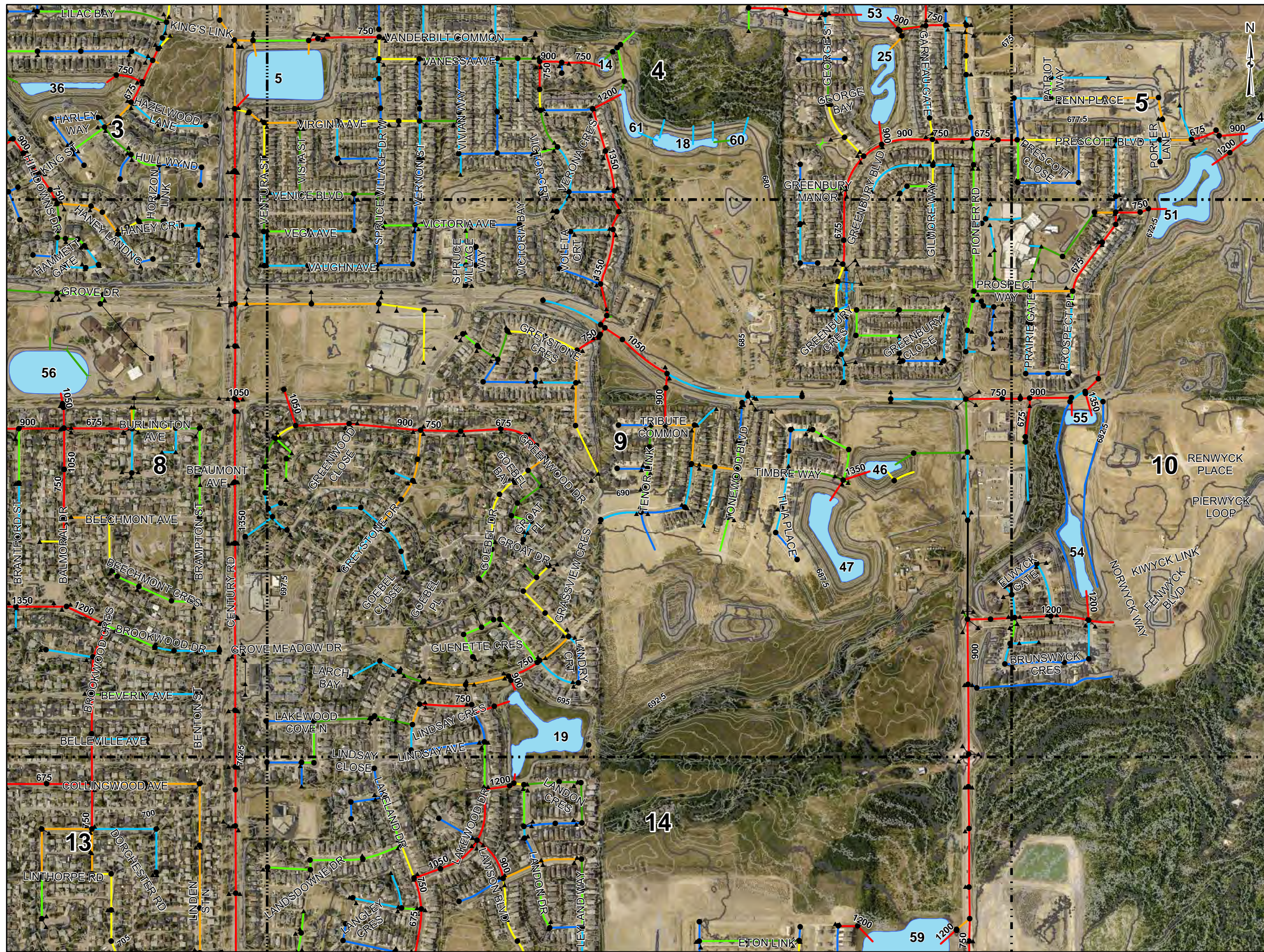
PROJECT
 SPRUCE GROVE STORMWATER MASTER PLAN
 CLIENT
 THE CITY OF SPRUCE GROVE

DATA SOURCES
 - Topographic Map: Sources: Esri, HERE, Garmin, USGS, Intermap, INCREMENT P, NRCan, Esri Japan, METI, Esri China (Hong Kong), Esri Korea, Esri (Thailand), NGCC, (c) OpenStreetMap contributors, and the GIS User Community
 Source: Esri, Maxar, Earthstar Geographics, and the GIS User Community

PROJECTION
 NAD 1983 CSRS 3TM 114
 0 60 120 240
 1:8,500 Meters



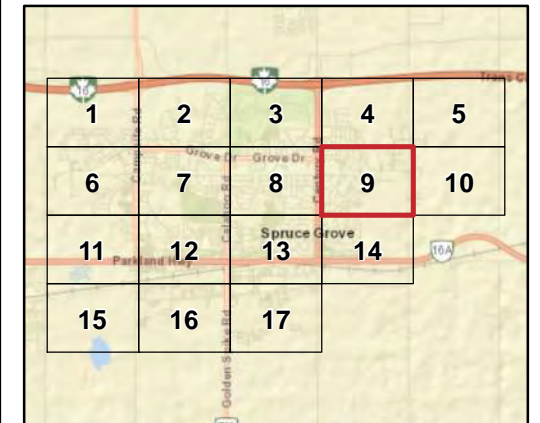
FIGURE A.8
 DATE 2024-05-27
 PROJECT NO. 16462
 AUTHOR JS



LEGEND

- Sewer Size**
- Unknown
 - ≤ 250 mm
 - 300 mm
 - 375 mm
 - 450 mm
 - 525 mm
 - 600 mm
 - ≥ 675 mm
- Culvert Size**
- Unknown
 - ≤ 250 mm
 - 300 mm
 - 375 mm
 - 450 mm
 - 525 mm
 - 600 mm
 - ≥ 675 mm
- Manholes
 ▲ Catch Basin
 — Catch Basin Leads
 ■ SWMF
 — Contours (2.5 m)
 — Contours (0.5 m)

Diameters are labelled in mm for sewers greater than 600 mm



TITLE
**EXISTING STORMWATER GIS DATABASE
 STORM SEWER AND CULVERT DIAMETER**

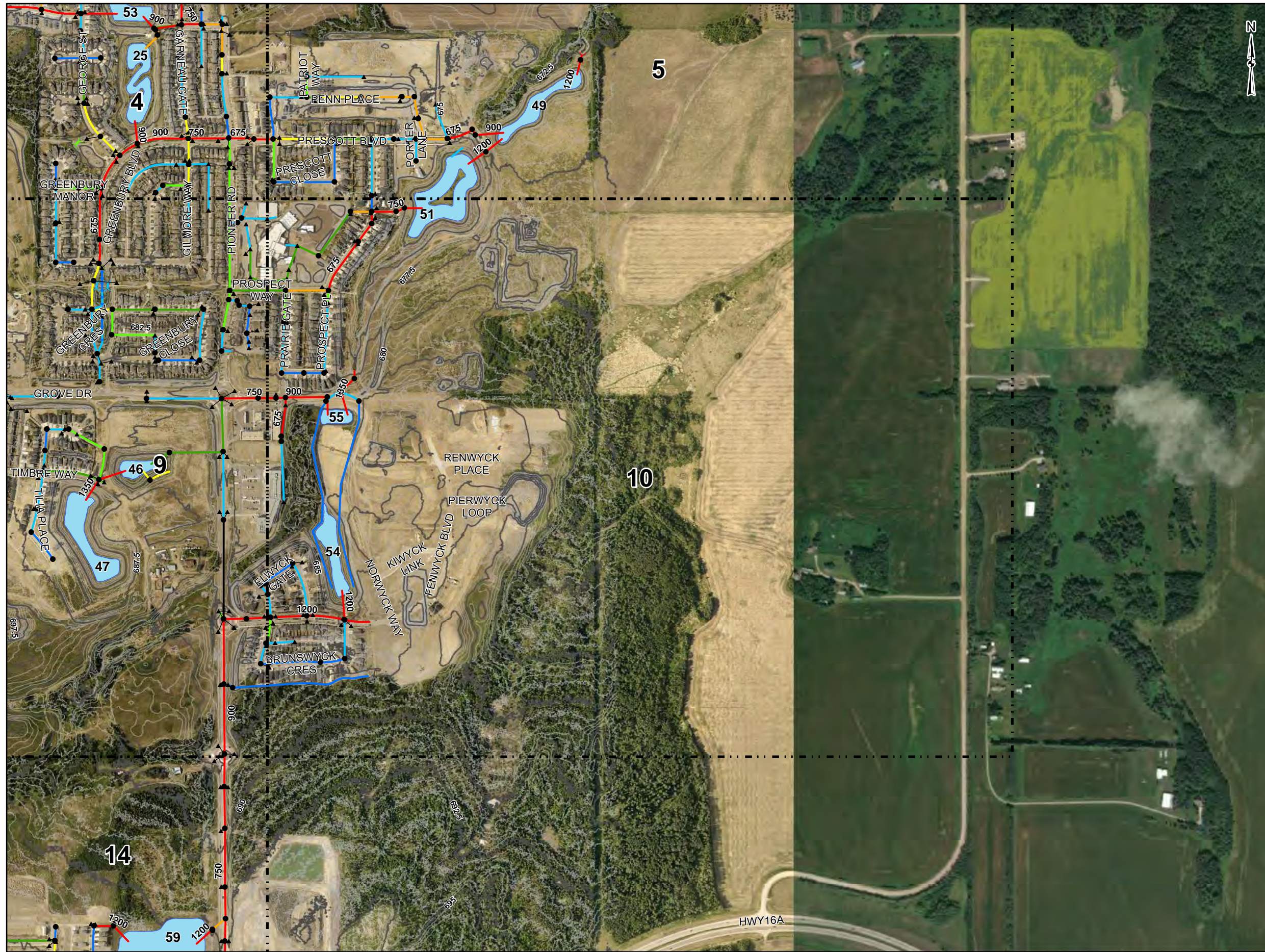
PROJECT
 SPRUCE GROVE STORMWATER MASTER PLAN
 CLIENT
 THE CITY OF SPRUCE GROVE

DATA SOURCES
 - Topographic Map: Sources: Esri, HERE, Garmin, USGS, Intermap, INCREMENT P, NRCan, Esri Japan, METI, Esri China (Hong Kong), Esri Korea, Esri (Thailand), NGCC, (c) OpenStreetMap contributors, and the GIS User Community
 Source: Esri, Maxar, Earthstar Geographics, and the GIS User Community

PROJECTION
 NAD 1983 CSRS 3TM 114
 0 60 120 240
 1:8,500 Meters

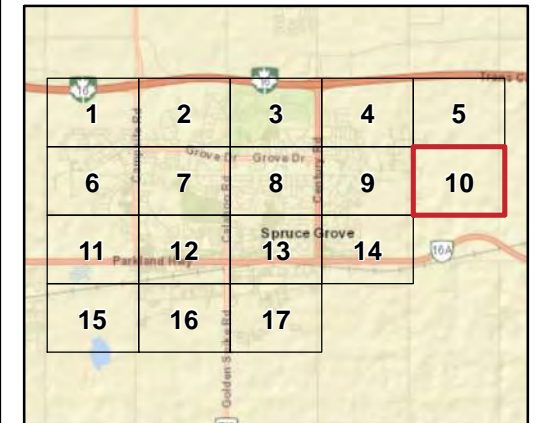


FIGURE A.9
 DATE 2024-05-27
 PROJECT NO. 16462
 AUTHOR JS



LEGEND

- Sewer Size**
- Unknown
 - ≤ 250 mm
 - 300 mm
 - 375 mm
 - 450 mm
 - 525 mm
 - 600 mm
 - ≥ 675 mm
- Culvert Size**
- Unknown
 - ≤ 250 mm
 - 300 mm
 - 375 mm
 - 450 mm
 - 525 mm
 - 600 mm
 - ≥ 675 mm
- Diameters are labelled in mm for sewers greater than 600 mm
- Manholes
 - ▲ Catch Basin
 - Catch Basin Leads
 - SWMF
 - Contours (2.5 m)
 - Contours (0.5 m)



TITLE
**EXISTING STORMWATER GIS DATABASE
STORM SEWER AND CULVERT DIAMETER**

PROJECT
SPRUCE GROVE STORMWATER MASTER PLAN
CLIENT
THE CITY OF SPRUCE GROVE

DATA SOURCES
- Topographic Map: Sources: Esri, HERE, Garmin, USGS, Intermap, INCREMENT P, NRCan, Esri Japan, METI, Esri China (Hong Kong), Esri Korea, Esri (Thailand), NGCC, (c) OpenStreetMap contributors, and the GIS User Community
Source: Esri, Maxar, Earthstar Geographics, and the GIS User Community

PROJECTION
NAD 1983 CSRS 3TM 114

0 60 120 240
1:8,500 Meters

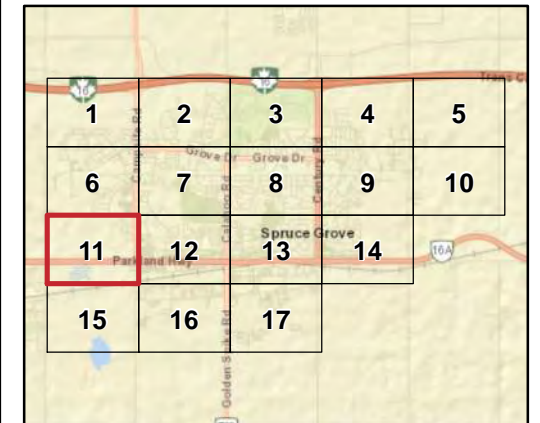


FIGURE A.10
DATE 2024-05-27
PROJECT NO. 16462
AUTHOR JS



LEGEND

- Sewer Size**
- Unknown
 - ≤ 250 mm
 - 300 mm
 - 375 mm
 - 450 mm
 - 525 mm
 - 600 mm
 - ≥ 675 mm
- Culvert Size**
- Unknown
 - ≤ 250 mm
 - 300 mm
 - 375 mm
 - 450 mm
 - 525 mm
 - 600 mm
 - ≥ 675 mm
- Diameters are labelled in mm for sewers greater than 600 mm
- Manholes
 - ▲ Catch Basin
 - Catch Basin Leads
 - SWMF
 - Contours (2.5 m)
 - Contours (0.5 m)



TITLE
EXISTING STORMWATER GIS DATABASE
STORM SEWER AND CULVERT DIAMETER

PROJECT
 SPRUCE GROVE STORMWATER MASTER PLAN
CLIENT
 THE CITY OF SPRUCE GROVE

DATA SOURCES
 - Topographic Map: Sources: Esri, HERE, Garmin, USGS, Intermap, INCREMENT P, NRCan, Esri Japan, METI, Esri China (Hong Kong), Esri Korea, Esri (Thailand), NGCC, (c) OpenStreetMap contributors, and the GIS User Community
 Source: Esri, Maxar, Earthstar Geographics, and the GIS User Community

PROJECTION
 NAD 1983 CSRS 3TM 114

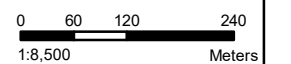
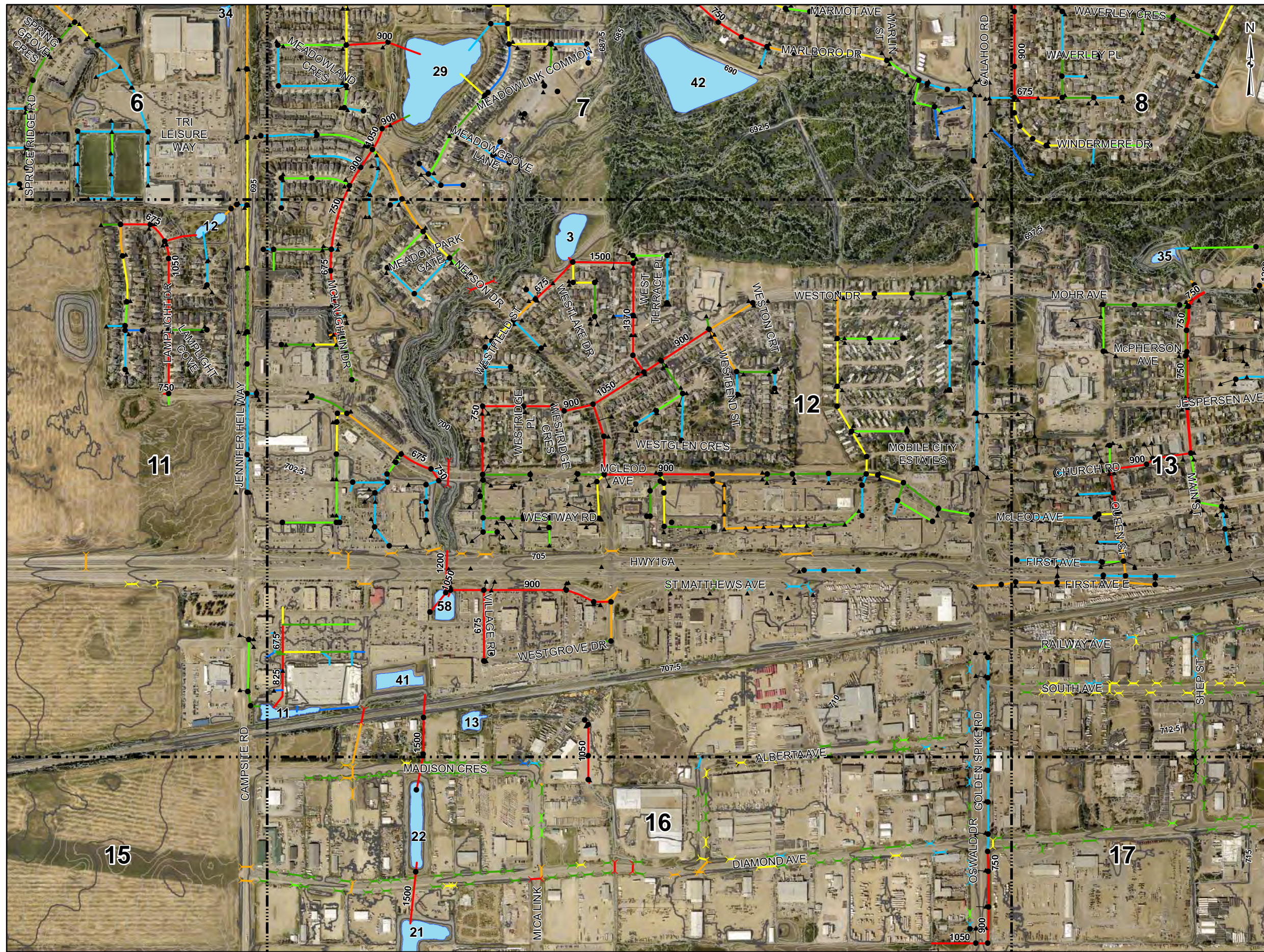


FIGURE A.11
DATE 2024-05-27
PROJECT NO. 16462
AUTHOR JS

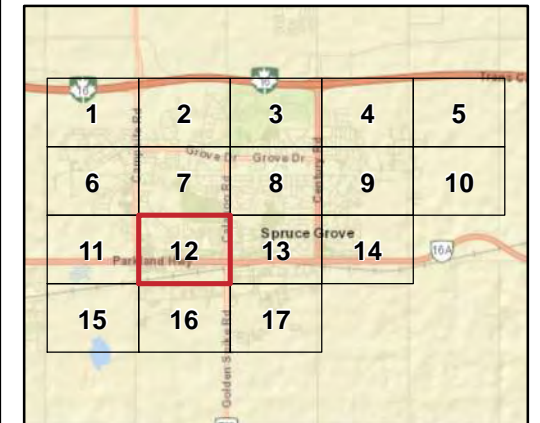
Document Path: M:\eremj\516462 - Spruce Grove Stormwater Master Plan\01_GIS\16462 - Map Book A - Storm Sewer Diameters.mxd



LEGEND

- Sewer Size**
- Unknown
 - <= 250 mm
 - 300 mm
 - 375 mm
 - 450 mm
 - 525 mm
 - 600 mm
 - >= 675 mm
- Culvert Size**
- Unknown
 - <= 250 mm
 - 300 mm
 - 375 mm
 - 450 mm
 - 525 mm
 - 600 mm
 - >= 675 mm
- Manholes
 ▲ Catch Basin
 — Catch Basin Leads
 ■ SWMF
 — Contours (2.5 m)
 — Contours (0.5 m)

Diameters are labelled in mm for sewers greater than 600 mm



TITLE
**EXISTING STORMWATER GIS DATABASE
 STORM SEWER AND CULVERT DIAMETER**

PROJECT
 SPRUCE GROVE STORMWATER MASTER PLAN
 CLIENT
 THE CITY OF SPRUCE GROVE

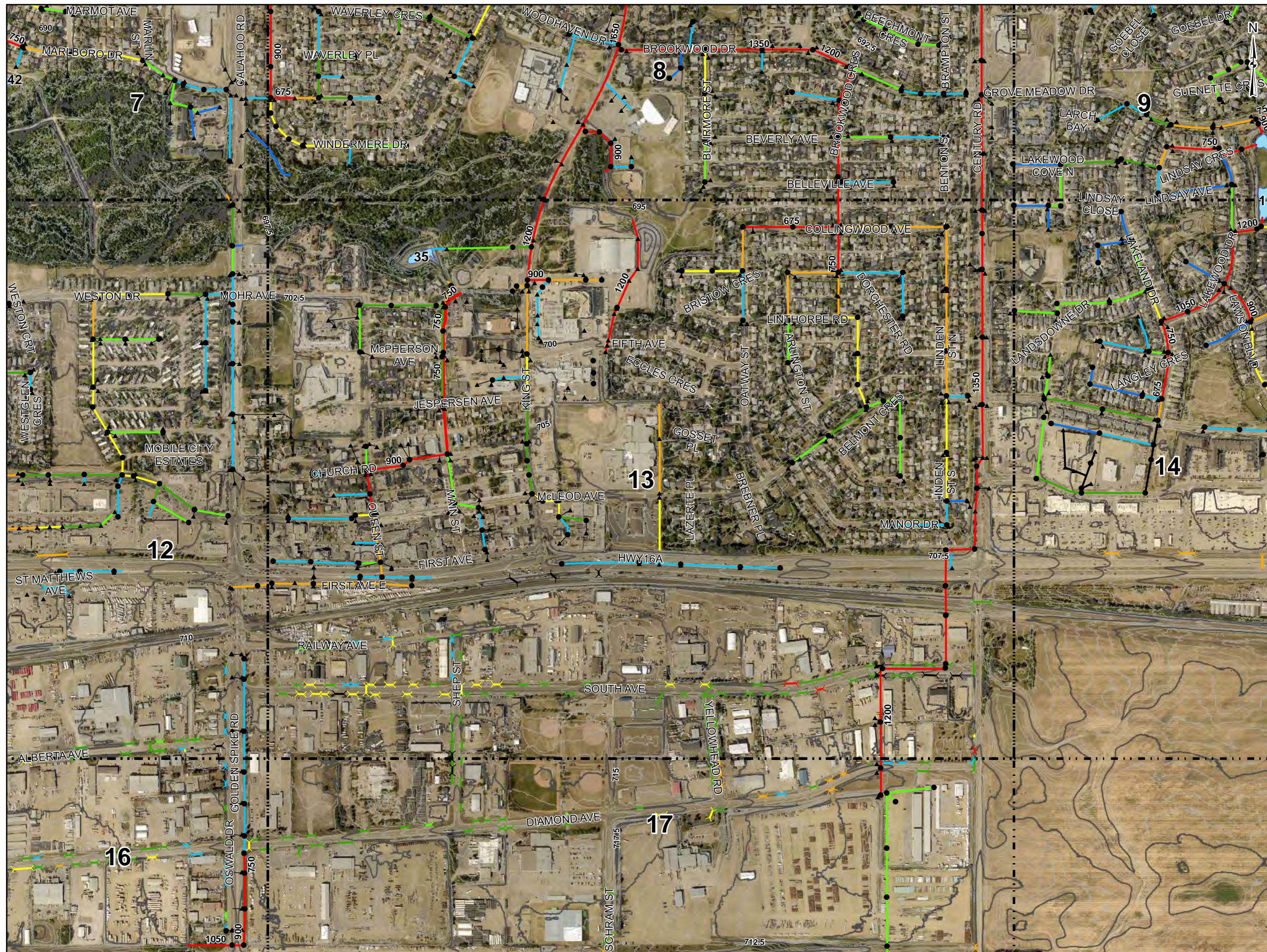
DATA SOURCES
 - Topographic Map: Sources: Esri, HERE, Garmin, USGS, Intermap, INCREMENT P, NRCan, Esri Japan, METI, Esri China (Hong Kong), Esri Korea, Esri (Thailand), NGCC, (c) OpenStreetMap contributors, and the GIS User Community
 Source: Esri, Maxar, Earthstar Geographics, and the GIS User Community

PROJECTION
 NAD 1983 CSRS 3TM 114

0 60 120 240
 1:8,500 Meters



FIGURE A.12
 DATE 2024-05-27
 PROJECT NO. 16462
 AUTHOR JS



LEGEND

- Sewer Size**
- Unknown
 - ≤ 250 mm
 - 300 mm
 - 375 mm
 - 450 mm
 - 525 mm
 - 600 mm
 - ≥ 675 mm
- Culvert Size**
- Unknown
 - ≤ 250 mm
 - 300 mm
 - 375 mm
 - 450 mm
 - 525 mm
 - 600 mm
 - ≥ 675 mm
- Manholes
 ▲ Catch Basin
 — Catch Basin Leads
 ■ SWMF
 — Contours (2.5 m)
 — Contours (0.5 m)

Diameters are labelled in mm for sewers greater than 600 mm

1	2	3	4	5
6	7	8	9	10
11	12	13	14	15
16	17			

TITLE
**EXISTING STORMWATER GIS DATABASE
 STORM SEWER AND CULVERT DIAMETER**

PROJECT
 SPRUCE GROVE STORMWATER MASTER PLAN
 CLIENT
 THE CITY OF SPRUCE GROVE

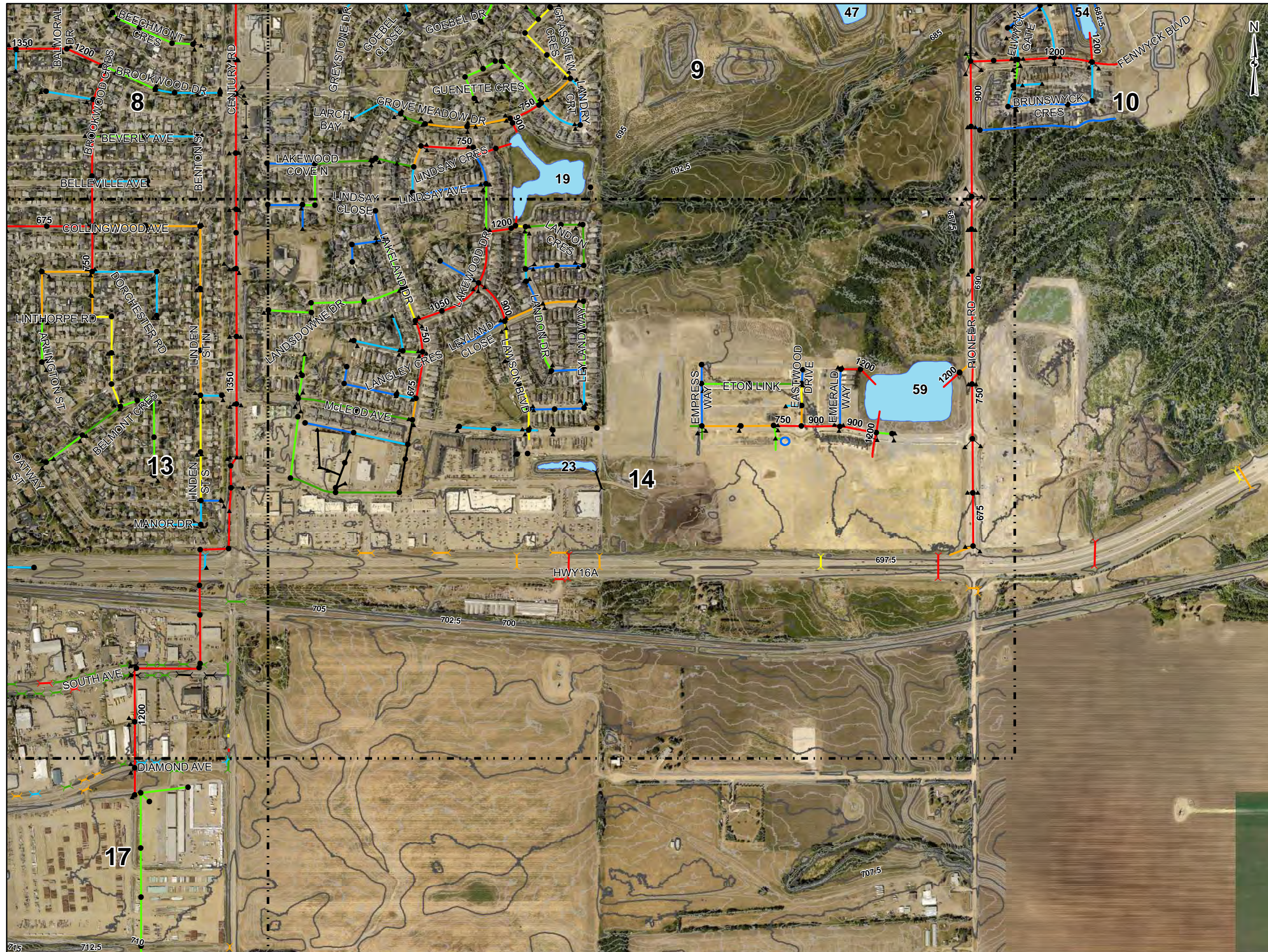
DATA SOURCES
 - Topographic Map: Sources: Esri, HERE, Garmin, USGS, Intermap, INCREMENT P, NRCan, Esri Japan, METI, Esri China (Hong Kong), Esri Korea, Esri (Thailand), NGCC, (c) OpenStreetMap contributors, and the GIS User Community
 Source: Esri, Maxar, Earthstar Geographics, and the GIS User Community

PROJECTION
 NAD 1983 CSRS 3TM 114

0 60 120 240
 1:8,500 Meters



FIGURE A.13
 DATE 2024-05-27
 PROJECT NO. 16462
 AUTHOR JS



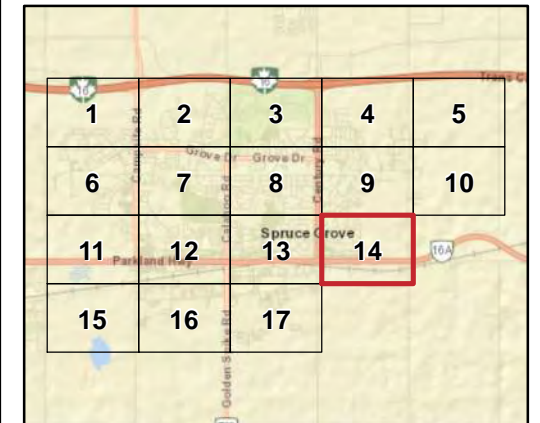
LEGEND

- Sewer Size**
- Unknown
 - <= 250 mm
 - 300 mm
 - 375 mm
 - 450 mm
 - 525 mm
 - 600 mm
 - >= 675 mm
- Manholes
 - ▲ Catch Basin
 - Catch Basin Leads
 - SWMF
 - Contours (2.5 m)
 - Contours (0.5 m)

Culvert Size

- Unknown
- <= 250 mm
- 300 mm
- 375 mm
- 450 mm
- 525 mm
- 600 mm
- >= 675 mm

Diameters are labelled in mm for sewers greater than 600 mm



TITLE
EXISTING STORMWATER GIS DATABASE
STORM SEWER AND CULVERT DIAMETER

PROJECT
 SPRUCE GROVE STORMWATER MASTER PLAN
CLIENT
 THE CITY OF SPRUCE GROVE

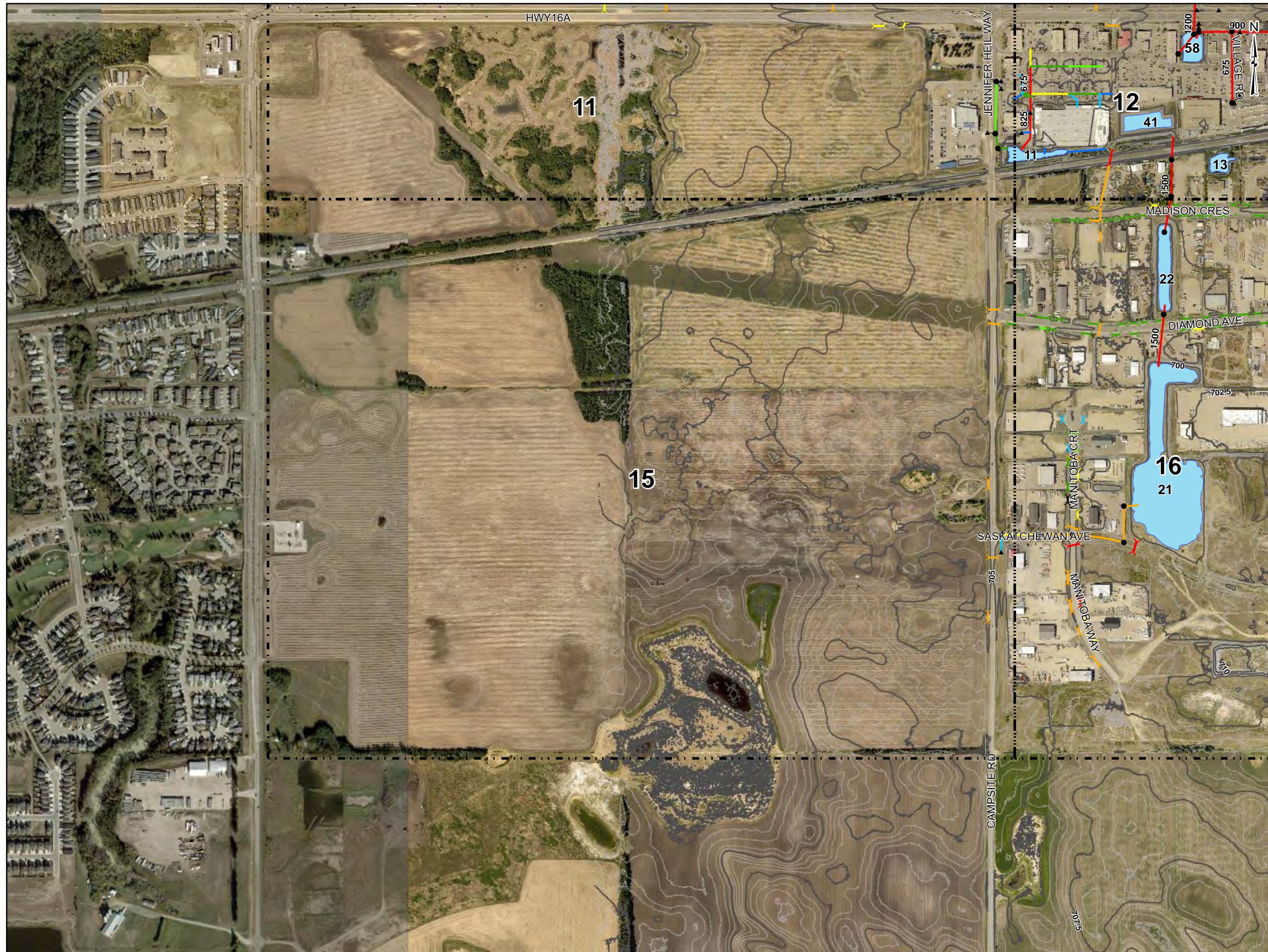
DATA SOURCES
 - Topographic Map: Sources: Esri, HERE, Garmin, USGS, Intermap, INCREMENT P, NRCan, Esri Japan, METI, Esri China (Hong Kong), Esri Korea, Esri (Thailand), NGCC, (c) OpenStreetMap contributors, and the GIS User Community
 Source: Esri, Maxar, Earthstar Geographics, and the GIS User Community

PROJECTION
 NAD 1983 CSRS 3TM 114

0 60 120 240
 1:8,500 Meters

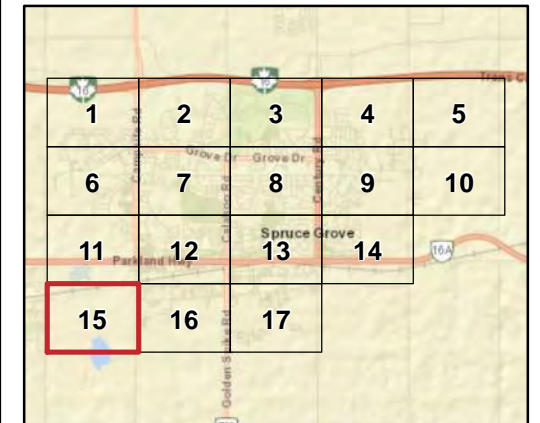


FIGURE A.14
DATE 2024-05-27
PROJECT NO. 16462
AUTHOR JS



LEGEND

- Sewer Size**
- Unknown
 - <= 250 mm
 - 300 mm
 - 375 mm
 - 450 mm
 - 525 mm
 - 600 mm
 - >= 675 mm
- Culvert Size**
- Unknown
 - <= 250 mm
 - 300 mm
 - 375 mm
 - 450 mm
 - 525 mm
 - 600 mm
 - >= 675 mm
- Diameters are labelled in mm for sewers greater than 600 mm
- Manholes
 - ▲ Catch Basin
 - Catch Basin Leads
 - SWMF
 - Contours (2.5 m)
 - Contours (0.5 m)



TITLE
**EXISTING STORMWATER GIS DATABASE
STORM SEWER AND CULVERT DIAMETER**

PROJECT
SPRUCE GROVE STORMWATER MASTER PLAN
CLIENT
THE CITY OF SPRUCE GROVE

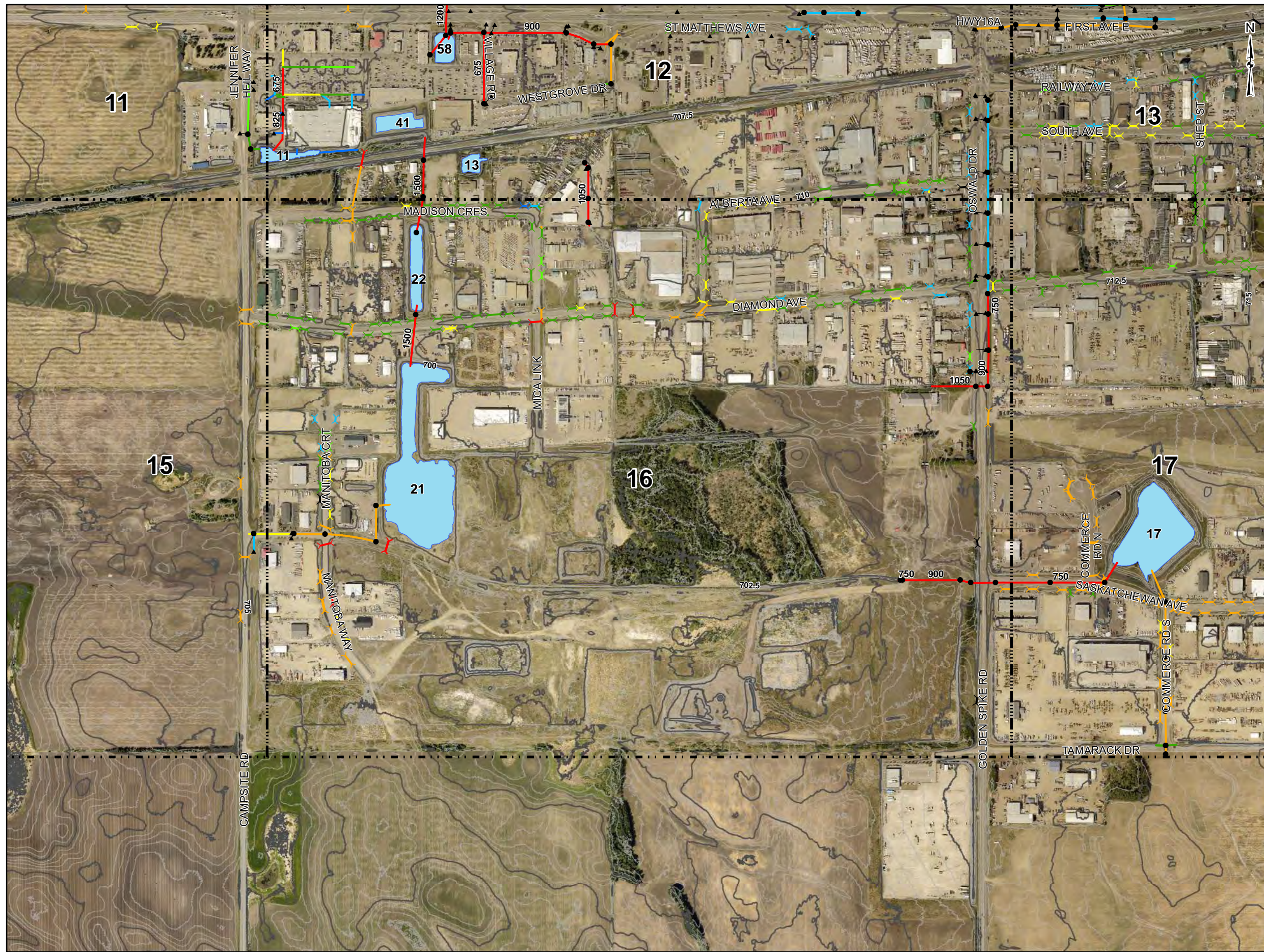
DATA SOURCES
- Topographic Map: Sources: Esri, HERE, Garmin, USGS, Intermap, INCREMENT P, NRCan, Esri Japan, METI, Esri China (Hong Kong), Esri Korea, Esri (Thailand), NGCC, (c) OpenStreetMap contributors, and the GIS User Community
Source: Esri, Maxar, Earthstar Geographics, and the GIS User Community

PROJECTION
NAD 1983 CSRS 3TM 114

0 60 120 240
1:8,500 Meters



FIGURE A.15
DATE 2024-05-27
PROJECT NO. 16462
AUTHOR JS



LEGEND

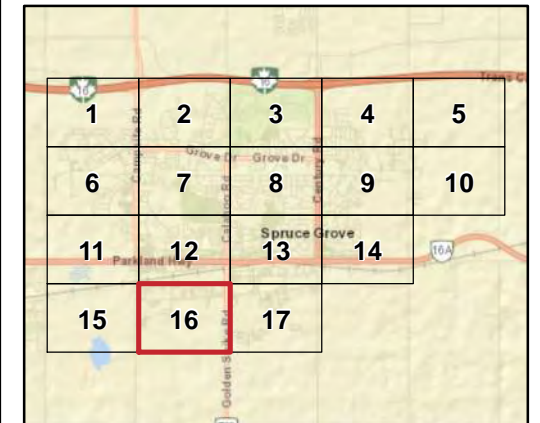
- Unknown
- ≤ 250 mm
- 300 mm
- 375 mm
- 450 mm
- 525 mm
- 600 mm
- ≥ 675 mm

- Manholes
- ▲ Catch Basin
- Catch Basin Leads
- SWMF
- Contours (2.5 m)
- Contours (0.5 m)

Culvert Size

- Unknown
- ≤ 250 mm
- 300 mm
- 375 mm
- 450 mm
- 525 mm
- 600 mm
- ≥ 675 mm

Diameters are labelled in mm for sewers greater than 600 mm



TITLE
**EXISTING STORMWATER GIS DATABASE
 STORM SEWER AND CULVERT DIAMETER**

PROJECT
 SPRUCE GROVE STORMWATER MASTER PLAN
 CLIENT
 THE CITY OF SPRUCE GROVE

DATA SOURCES
 - Topographic Map: Sources: Esri, HERE, Garmin, USGS, Intermap, INCREMENT P, NRCan, Esri Japan, METI, Esri China (Hong Kong), Esri Korea, Esri (Thailand), NGCC, (c) OpenStreetMap contributors, and the GIS User Community
 Source: Esri, Maxar, Earthstar Geographics, and the GIS User Community

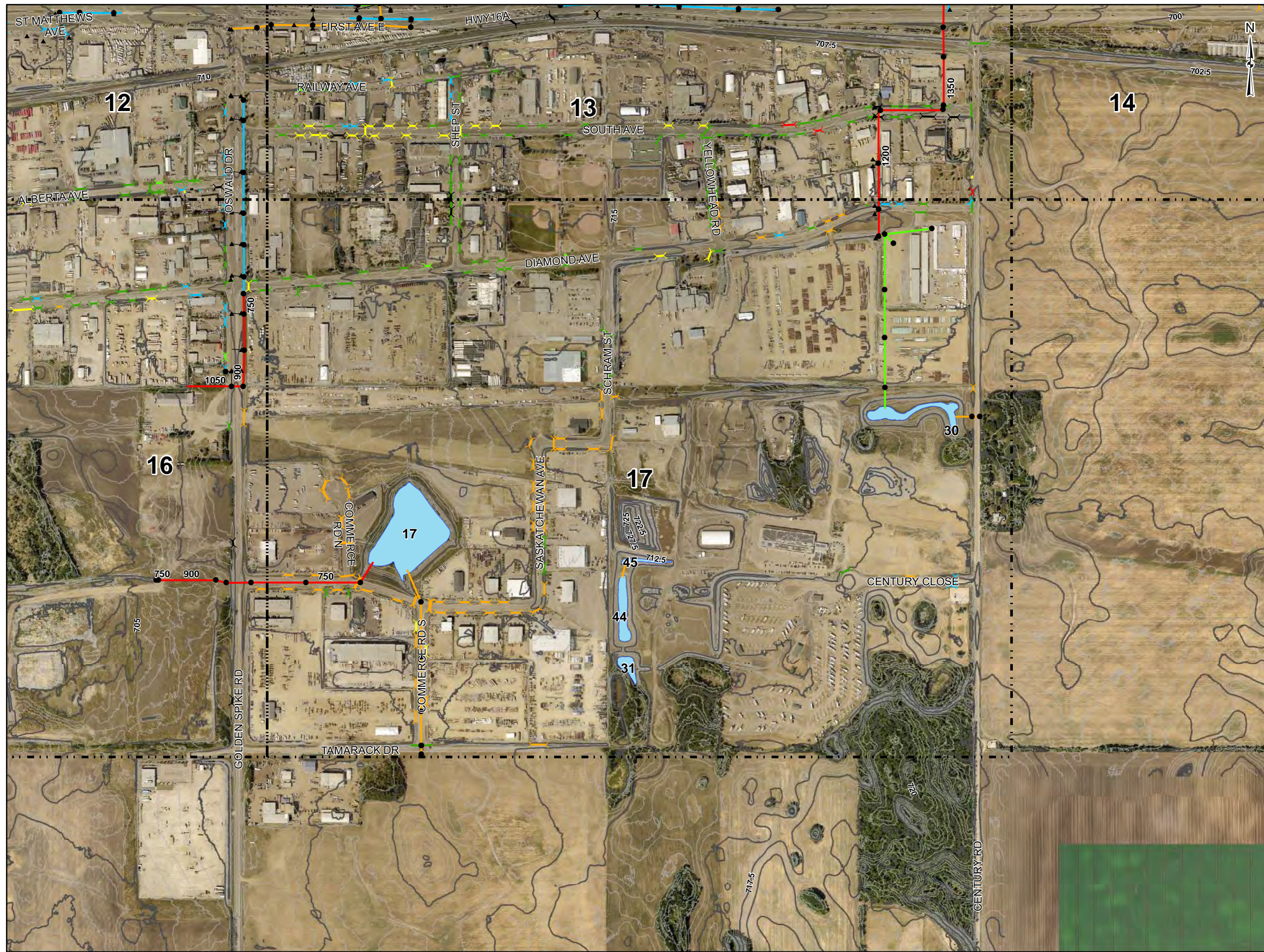
PROJECTION
 NAD 1983 CSRS 3TM 114

0 60 120 240
 1:8,500 Meters

ISL

FIGURE A.16
 DATE 2024-05-27
 PROJECT NO. 16462
 AUTHOR JS

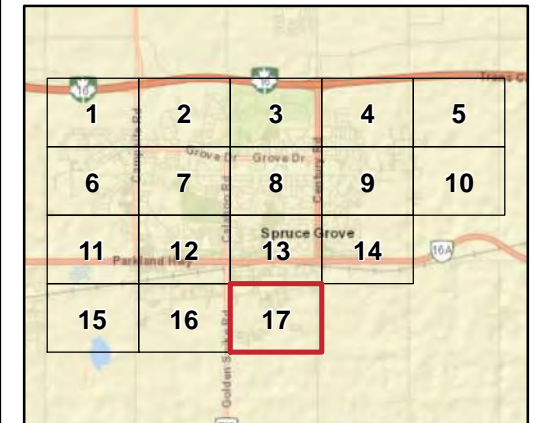
Document Path: M:\eremj\16462 - Spruce Grove Stormwater Master Plan\01_GIS\16462 - Map Book A - Storm Sewer Diameters.mxd



LEGEND

- Sewer Size**
- Unknown
 - <= 250 mm
 - 300 mm
 - 375 mm
 - 450 mm
 - 525 mm
 - 600 mm
 - >= 675 mm
- Culvert Size**
- Unknown
 - <= 250 mm
 - 300 mm
 - 375 mm
 - 450 mm
 - 525 mm
 - 600 mm
 - >= 675 mm
- Manholes
 ▲ Catch Basin
 — Catch Basin Leads
 ■ SWMF
 — Contours (2.5 m)
 — Contours (0.5 m)

Diameters are labelled in mm for sewers greater than 600 mm



TITLE
 EXISTING STORMWATER GIS DATABASE
 STORM SEWER AND CULVERT DIAMETER

PROJECT
 SPRUCE GROVE STORMWATER MASTER PLAN
CLIENT
 THE CITY OF SPRUCE GROVE

DATA SOURCES
 - Topographic Map: Sources: Esri, HERE, Garmin, USGS, Intermap, INCREMENT P, NRCan, Esri Japan, METI, Esri China (Hong Kong), Esri Korea, Esri (Thailand), NGCC, (c) OpenStreetMap contributors, and the GIS User Community
 Source: Esri, Maxar, Earthstar Geographics, and the GIS User Community

PROJECTION
 NAD 1983 CSRS 3TM 114

0 60 120 240
 1:8,500 Meters



FIGURE A.17
DATE 2024-05-27
PROJECT NO. 16462
AUTHOR JS