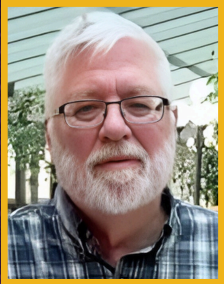




## 2024 INDUCTEES



GRANT  
CRAWFORD



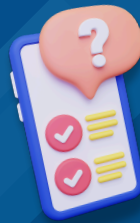
DR. ROBIN  
MCLEOD

Read more about this year's inductees at  
[sprucegrove.org/AOE2024](https://sprucegrove.org/AOE2024)

## Help us update Spruce Grove's brand!

We are embarking on the adventure of updating the brand for our city, and we need your help!

Share your thoughts through a short online survey at  
[sprucegrove.org/BrandSurvey](https://sprucegrove.org/BrandSurvey).



## Experience the best of summer at Grove Gatherings!

From June to August, enjoy free, live performances in Spruce Grove's parks! Musicians, cultural groups, bands, and even circus performers will light up the stage every second Tuesday. Bring your family and friends, a lawn chair or picnic blanket, and enjoy the show! Visit [sprucegrove.org/GroveGatherings](https://sprucegrove.org/GroveGatherings) for more details on the next event.



## Career Opportunities

- Manager of Parks and Open Spaces
- Planning and Development Permit Issuer
- Manager of Total Compensation
- Director of Facilities and Fleet Management

For details or to apply, visit [sprucegrove.org/Careers](https://sprucegrove.org/Careers).

## News You Can Use

### 2023 Annual Report and Annual Report Highlights now available

Each year, the City of Spruce Grove publishes an annual report to feature accomplishments from the year, provide financial information, and preview what's happening in the future. This year's report is now available, and we're excited to share it with you! And new this year - we have published an Annual Report Highlights companion document, a summary of the annual report containing condensed articles and simplified financial information.

Find both reports at [sprucegrove.org/AnnualReport](https://sprucegrove.org/AnnualReport).

### Community Standards Bylaw

A new Community Standards Bylaw (CSB) is coming to Spruce Grove this summer! The CSB, which was passed by City Council during a May 27 meeting, will be an important tool for ensuring a safe, healthy and inviting community. The CSB and related amendments to other bylaws address topics related to public behaviour, property maintenance, neighbour relations, noise control and excessive odours. The bylaw will go into effect on July 1.

Details at [sprucegrove.org/CommunityStandards](https://sprucegrove.org/CommunityStandards).

### Important information for cat owners

As pet owners, we have a responsibility to care for our pets, while also being considerate of our neighbours and the community.

To bring clarity to the regulations around pet ownership in Spruce Grove and ensure the safety and well-being of residents, pets, and pet owners, the City's Dog and Domestic Animal Control Bylaw has been reviewed and updated. It is now called the Responsible Pet Ownership Bylaw.

Under the updated bylaw, cat owners are required to regulate the behaviour of their pets in a manner consistent with that of dogs, including:

- They are not permitted to run at large.
- They must wear a collar with ID tag containing the owner's phone number.
- They must not cause a public nuisance.

For more information visit [sprucegrove.org/Cats](https://sprucegrove.org/Cats).

### Reminder! Property tax payments due June 30

City of Spruce Grove 2024 property tax notices were mailed on May 24, and payments are due by June 30, 2024. If you haven't received your property tax notice, or if you have any questions about your property taxes, please call 780-962-7634 ext. 119 or email [propertytaxes@sprucegrove.org](mailto:propertytaxes@sprucegrove.org). Visit [sprucegrove.org/PropTax24](https://sprucegrove.org/PropTax24).

## Council Meetings

### Regular Council meeting Monday, June 24, 2024

Spruce Grove City Council's Regular Council meeting on June 24 at 4:30 p.m. will be open to the public and live streamed at [sprucegrove.org/Agenda](https://sprucegrove.org/Agenda).

Members of the public may participate in the Public Input Session either in person or virtually. Virtual participation may be done by registering by email [cityclerk@sprucegrove.org](mailto:cityclerk@sprucegrove.org) or by calling 780-962-7615 before noon on June 24.

Alternately, residents can submit a statement or a question to be read on their behalf by emailing [cityclerk@sprucegrove.org](mailto:cityclerk@sprucegrove.org) until the Public Input Session is complete.

Agendas and meeting minutes are available at [sprucegrove.org/Agenda](https://sprucegrove.org/Agenda).

### We want to hear from you!

As we develop the Housing Strategy to identify current and future housing needs for Spruce Grove, your input is important to us. Visit [sprucegrove.org/HousingStrategy](https://sprucegrove.org/HousingStrategy) and complete the online survey by July 15.



### Canada Day celebration July 1 at Jubilee Park!

- Pancake breakfast
- Community market and food trucks
- Waterdogs competition
- Children's music and entertainment
- Fireworks display
- Free Park & Ride shuttles
- BMX stunt show
- Musical headliner Jojo Mason

Plan your day at [sprucegrove.org/CanadaDay!](https://sprucegrove.org/CanadaDay!)

## Notice of development permit decisions

The following development permits for discretionary uses and variances have been approved under the provisions of the Land Use Bylaw. This list does not include Permitted Uses. For a full list of all Development Permit decisions, as well as how to appeal a decision of the Development Officer to the Subdivision and Development Appeal Board, please visit [sprucegrove.org/DevPermitNotices](https://sprucegrove.org/DevPermitNotices). Please direct any questions to the Planning and Development Department at 780-962-7582, Monday to Friday from 8:30 a.m. to 4:30 p.m.

Permit #	Legal Land Description	Project Address
Use: Discretionary PLDPHO202400443	0624991;3;19 Home occupation offering light welding, fabrication and engraving services	38 VEGA AVE
PLDPR202400470	2122703;2;36 To construct a secondary suite in the basement of an existing single detached dwelling	50 BRUNSWYCK CRES
PLDPR202400494	2221764;3;29 To construct a secondary suite in the basement of the proposed single detached dwelling	13 ETON LINK