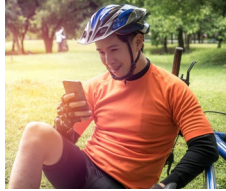


Bike Index

Have you registered your rides? Take the time to add your family's bicycles to the Bike Index. If your bike is ever lost or stolen, Bike Index ensures bike shops, police, and other riders can help you get it back. Sign up for free at bikeindex.org.



Events and Programs

Tri Municipal Region Fall Info Night

Learn about recreation, culture, and leisure opportunities available this fall and winter. The Tri Municipal Region Fall Info Night is Aug. 24 at the TransAlta Tri Leisure Centre. Details at sprucegrove.org/InfoNight.



Drive for Change

Drive for Change to support men's mental health and wellness. An evening of fun, food, disc golf, and discussion about mental health initiatives and supports in our region. August 30, 2023 at Jubilee Park.



Register at sprucegrove.org/FCSSPrograms.

Youth at the Log Cabin

Are you 12 to 18 years old and looking for something fun to do this summer?

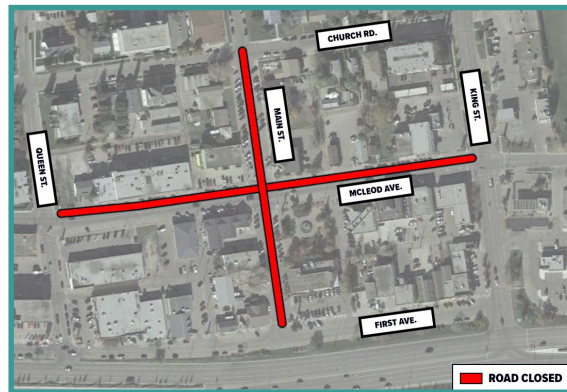
Check out Youth at the Log Cabin in Central Park every day (except Sunday) during August. Each day features a different theme where you can drop in and relax, play games and connect with friends. For details and themes, visit sprucegrove.org/LogCabinYouth.



News You Can Use

Main St from First Ave to Church Rd and McLeod Ave from Queen St to King St, including intersection, temporarily closed starting Aug. 18

Starting on or about August 18, the intersection at McLeod Avenue and Main Street will be fully closed for approximately two weeks. This includes the full closure of Main Street from First Avenue to Church Road and McLeod Avenue from Queen Street to King Street. This closure is necessary to complete the concrete pedestrian crossings and complete the final paving of asphalt on the roadways. Visit sprucegrove.org/CCARP.



E-scooter pilot program

The City has partnered with Bird Canada to conduct an e-scooter pilot program this summer. E-scooters can be rented using a smartphone app and used for short trips around the city. Learn more about the E-scooter pilot program at sprucegrove.org/Escooters.



Liberty Swing

The new wheelchair-accessible Liberty Swing is available for use at Jubilee Park! Learn more and watch our handy how-to video at sprucegrove.org/LibertySwing.



Sports Fields

Wondering if your favourite ball diamond, football or soccer field is open? Visit sprucegrove.org/Fields to get the current status of sports fields in Spruce Grove or call our Sports Field Hotline at 780-962-7602.



TICKETS ON SALE AUG. 16!

See the full page ad in this week's newspaper for more information.

HORIZON
STAGE
Performing Arts Centre



CityPulse E-Newsletter

Be in the know! Our bi-weekly e-newsletter is a great way to stay informed. From City news, service updates, programs, events, and initiatives, you'll get the information you need to know.

sprucegrove.org/CityPulse



Public Hearings – Monday, Aug. 21, 2023

Bylaw C-1221-22 - Land Use Bylaw Amendment
Redistricting - East Campsite Stage 3

Development Permit Application - Direct Control District -
Child Care Facility with an outdoor play area -
Suite 1, 420 King Street (former Examiner location)

See the ads in this week's newspaper for more information.

sprucegrove.org/PublicHearings

Notice of development permit decisions

The following development permits for discretionary uses and variances have been approved under the provisions of the Land Use Bylaw. This list does not include Permitted Uses. For a full list of all Development Permit decisions, as well as how to appeal a decision of the Development Officer to the Subdivision and Development Appeal Board, please visit sprucegrove.org/DevPermitNotices. Please direct any questions to the Planning and Development Department at 780-962-7582, Monday to Friday from 8:30 a.m. to 4:30 p.m.

Permit #	Legal Land Description	Project Address
Use: Permitted with Variance		
PLDPR202300617	1523840;7:88 Variance to the side yard setback of the existing single detached dwelling	33 HULL WYND

Career Opportunities

- General Manager of Corporate Services and Chief Financial Officer (CFO)
- Data Analyst
- Assistant Controller – Budget and Financial Planning
- Manager of Enforcement Services
- Assistant Deputy Chief
- Facility Attendant
- Facility Booking Specialist (Temporary)
- Insurance and Risk Management Advisor

For details or to apply, visit sprucegrove.org/Careers.