

Understanding Your 2025 PROPERTY TAX NOTICE

Each year in May, the City of Spruce Grove sends tax notices to Spruce Grove property owners. This notice includes your municipal property tax levy, as well as levies the City collects on behalf of other organizations for education and seniors' affordable housing.

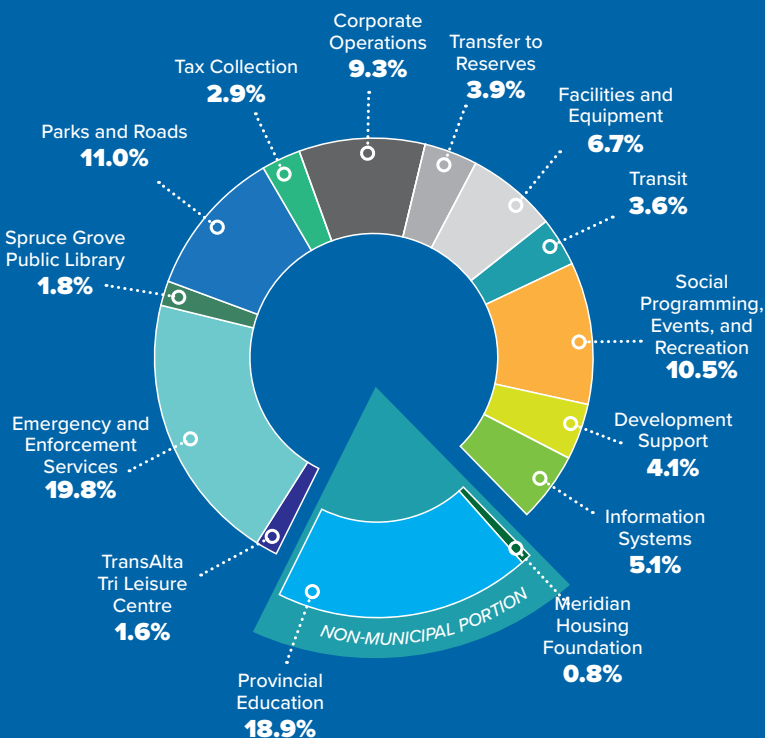
Property taxes fund City services and amenities

The City's interim 2025 municipal budget was approved by City Council in the fall of 2024 as part of the 2025-2027 Corporate Plan. Council approved the final 2025 budget on April 14, 2025, with the Spring Budget Adjustment. This budget funds all the services we offer, such as roads, public transit, public safety, parks and open spaces, programming, community amenities, and much more! The costs of providing these services are shared by property owners through the municipal portion of your property taxes and are allocated based on property assessment value.

How property taxes are calculated

Earlier this year, you received your 2025 annual assessment notice that outlined the total assessed value of your property. Assessment values are based on the provincially legislated valuation date of July 1, 2024, and the physical condition of a property as of December 31, 2024. The amount of property tax you pay is based on this assessed value. The assessed value of your home can vary from today's market value, and will be used to determine next year's assessment value.

Where Do Your Tax Dollars Go?



Non-municipal portion of property taxes

Your tax bill also includes levies the City collects on behalf of others for education and senior living. Taxpayers are required to pay these amounts whether or not they use the services.

Education taxes:

The Alberta Education Levy and the Evergreen Catholic School Levy are collected on behalf of the Government of Alberta for education. The City of Spruce Grove does not set or control the requisition amount.

The Government of Alberta has adopted a new strategy to structure provincial property taxes to generate tax revenue that is equivalent to one-third of the operating cost for the Ministry of Education by 2026-27. To meet this goal, the province is increasing the provincial tax rate on residential, farmland and non-residential properties in 2025-26.

For Spruce Grove residents, this change results in an increase of 4.30 per cent on residential and farmland properties and an increase of 8.46 per cent on non-residential properties in 2025.

Learn more at alberta.ca/education-property-tax.

Meridian Housing Foundation:

The City of Spruce Grove, Town of Stony Plain, and Parkland County are all required to collect taxes set by the Meridian Housing Foundation (MHF) to contribute to seniors' living facilities.

Municipal portion of property taxes

The municipal portion of your property taxes is based on the City's budgeted revenue requirements. This portion is retained by the City and is used to pay for amenities and services for residents and the community as a whole.

Questions?

Call: 780-962-7634 ext.119

Email: propertytaxes@sprucegrove.org

Visit: sprucegrove.org/PropertyTax

For details, visit

sprucegrove.org/YourPropTaxBill



 The City of
SPRUCE GROVE