

CONIFEROUS
LESS THAN 3.0m HEIGHT

DECIDUOUS
LESS THAN 100mm CAL.

NOTES:

1. IF MINIMUM UTILITY SETBACKS PERMIT, POSITION TREE STAKES INTO DIRECTION OF PREVAILING WINDS
2. ALL TREE STAKES TO MAINTAIN 1.0m FROM ALL U.G. POWER, TELEPHONE AND GAS ALIGNMENTS
3. DIG ALL ROOT HOLES BY HAND WHEN CLOSER THAN 1.0m TO U.G. POWER, TELEPHONE AND GAS ALIGNMENTS

- PRUNE ONLY DEAD OR DISEASED TREE LIMBS. MAINTAIN TREE FORM. DECIDUOUS TREES ONLY.

RUBBER BLACK HOSE—12mm OR APPROVED EQUAL, POSITION ABOVE FIRST STRONG BRANCHES OF DECIDUOUS TREE AND APPROX. 3/5 HEIGHT FOR CONIFEROUS TREE.

GALVANIZED GUY WIRE No. 12 MIN. LEAVE ENOUGH FLEXIBILITY IN WIRE TO ALLOW SLIGHT MOVEMENT OF TREE

2—STAKES PER TREE. ALL EXPOSED PORTIONS OF TREE STAKES FREE OF RUST SCALED AND PRIMED. TREE STAKES MIN. 2.1m LENGTH METAL T-BAR.

100mm MIN. DECIDUOUS WOOD CHIP MULCH OR APPROVED EQUAL OVER EXPOSED ROOTBALL. MULCH PULLED BACK 150mm RADIUS FROM THE TRUNK.

TREE STAKE SET MINIMUM 300mm INTO UNDISTURBED SOIL.

CUT BACK WIRE BASKET AND BURLAP TO EXPOSE 1/3 TOP OF ROOTBALL. POSITION TOP OF ROOTBALL 50mm MAX. BELOW FINISH GRADE. REMOVE CUT BASKET AND BURLAP FROM ROOT HOLE

TOPSOIL LIGHTLY COMPACTED.

ROOTBALL MINIMUM SIZE AS PER SPECIFICATIONS.

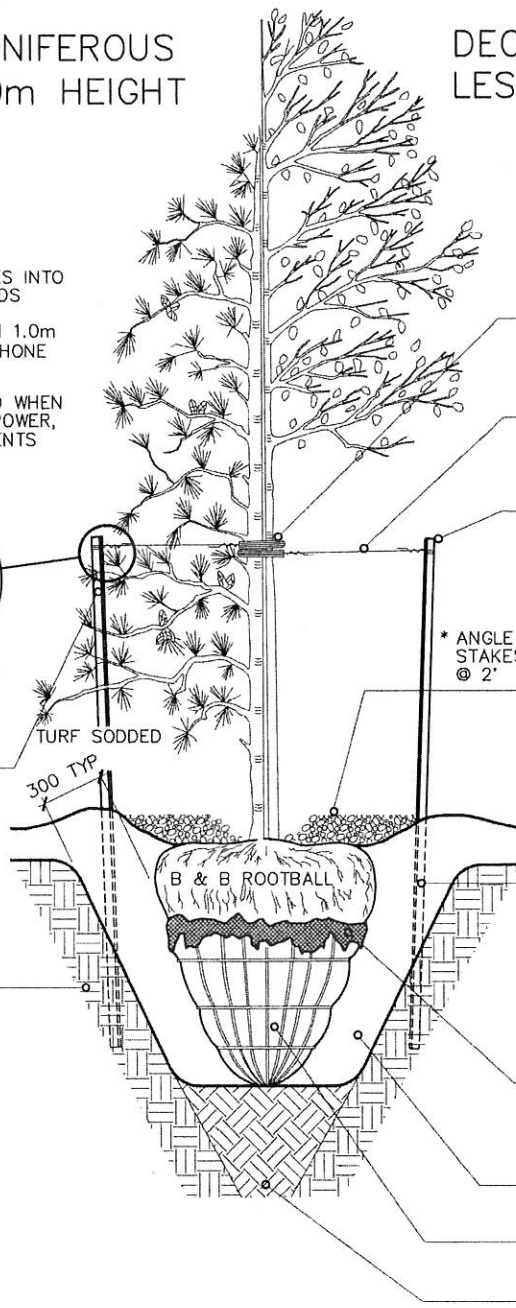
COMPACTED NATIVE SOIL.

DETAIL N.T.S.

TOP 300mm ALL TREE STAKES PAINTED TO MATCH ANNUAL COLOR CODES.


2012	—	YELLOW
2013	—	BLUE
2014	—	BLACK
2015	—	GREEN
2016	—	WHITE
2017	—	YELLOW

UNDISTURBED NATIVE SUBSOIL



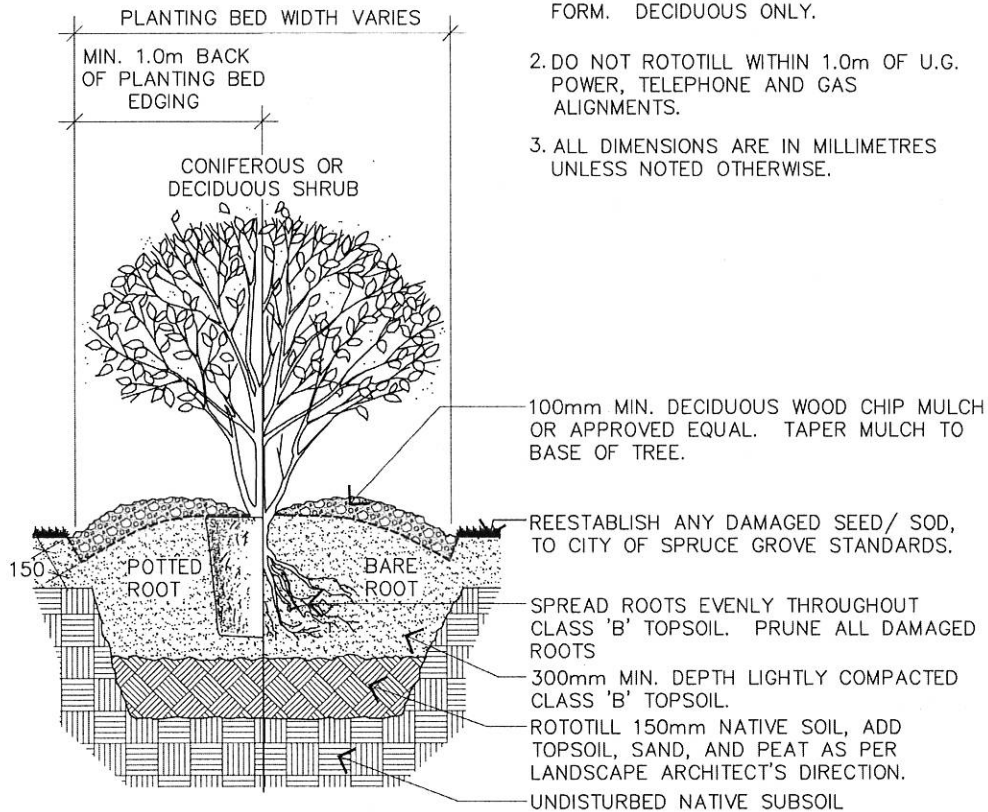
THE CITY OF
SPRUCE GROVE

PLANNING AND INFRASTRUCTURE

REVISIONS			TREE PLANTING		
DATE	DETAILS	DRAWN		DRAWN:	DATE:
				A. STACHNIAK	JULY 17, 2012
				CHECKED: J. MUSTARD	SCALE: NOT TO SCALE
				APPROVED: J. MUSTARD	DRAWING No.: LG-01


NOTES:

1. PRUNE ONLY DEAD, BROKEN, OR DISEASED BRANCHES TO MAINTAIN PROPER SHRUB FORM. DECIDUOUS ONLY.
2. DO NOT ROTOTILL WITHIN 1.0m OF U.G. POWER, TELEPHONE AND GAS ALIGNMENTS.
3. ALL DIMENSIONS ARE IN MILLIMETRES UNLESS NOTED OTHERWISE.



THE CITY OF
SPRUCE GROVE

PLANNING AND INFRASTRUCTURE

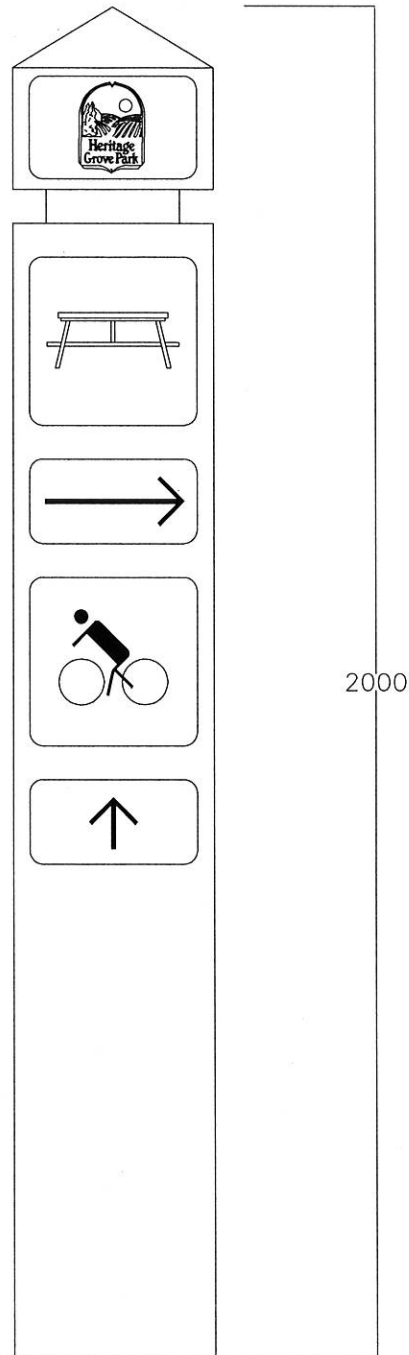
REVISIONS			SHRUB PLANTING		
DATE	DETAILS	DRAWN		DRAWN: A. STACHNIAK	DATE: JULY 17, 2012
				CHECKED: J. MUSTARD	SCALE: NOT TO SCALE
				APPROVED: J. MUSTARD	DRAWING No.: LG-02

TYPICAL SECTION

300 x 300 x 3000 P.T.
TIMBER POST
CHAMFER TOP
50 DEEP REVEAL
HGP LOGO TO BE ALUMINUM
BACKED LOGO ON 2 SIDES
TREAT ALL CUTS WITH
TWO COATS GREEN PENTOX
TWO COATS OLYMPIC
SEMI-TRANS. STAIN CEDAR

LOGOS, LETTERS & ARROWS
TO BE ALUMINUM BACKED
REFLECTIVE DECALS
AND TO BE RECESSED INTO
POST FLUSH WITH FACE
SIGNS TO BE SECURED TO
POST WITH TAMPER-PROOF
STAINLESS STEEL SCREWS
CONSISTENT WITH EXISTING
CITY STANDARD

PLOT HOLE TO BE
BACKFILLED WITH COMPACTED
20mm CRUSHED GRAVEL



XREF'S

C:\DETAILS\SHEET2-TK

THE CITY OF
SPRUCE GROVE

PLANNING AND INFRASTRUCTURE

REVISIONS

DATE	DETAILS	DRAWN

TRAIL SIGN POST

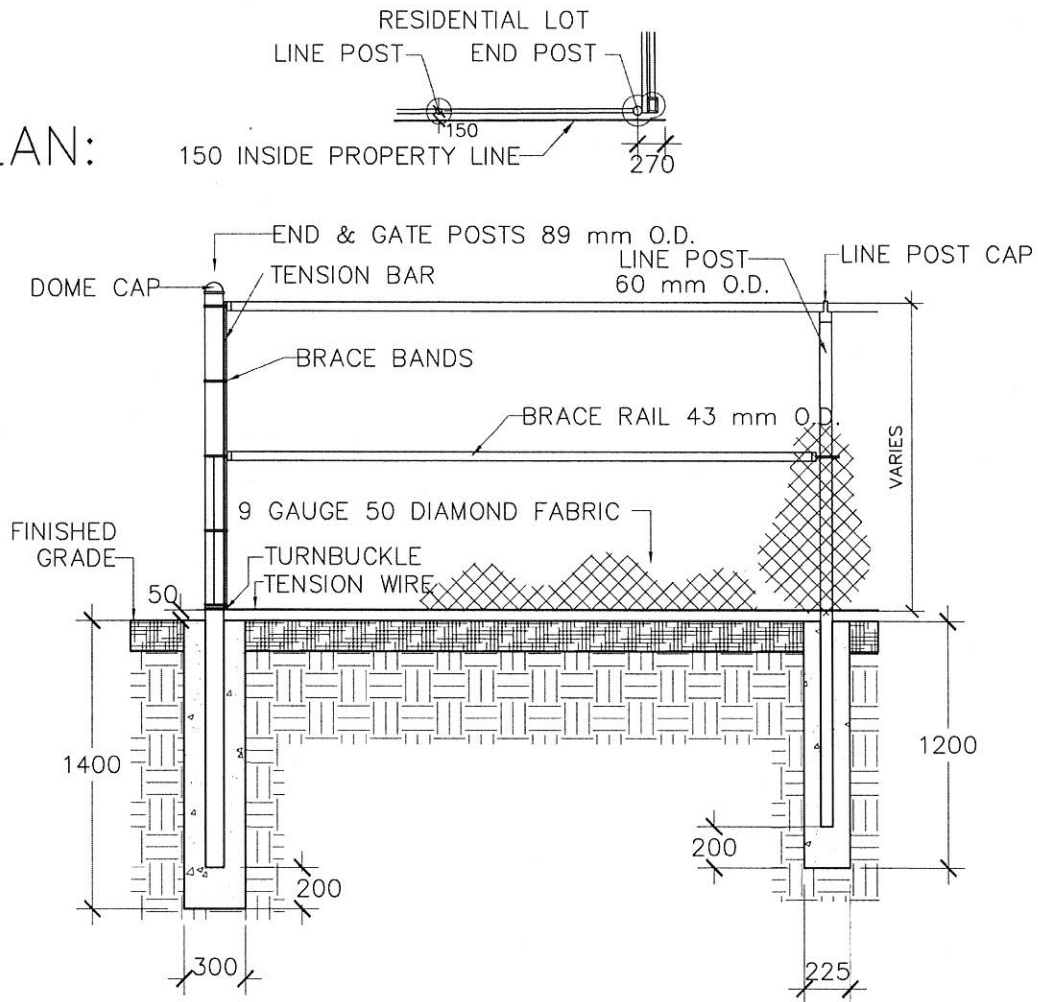


DRAWN: T. CRAWFORD	DATE: MARCH 6, 2006
CHECKED: J. MUSTARD	SCALE: NOT TO SCALE
APPROVED: J. MUSTARD	DRAWING No.: LG-03

NOTES:

- SPACING BETWEEN POSTS NOT TO EXCEED 3050mm
- END, CORNER & GATE POSTS 89 O.D., LINE POSTS 60 O.D., RAILS 43 O.D.
- ALL PIPE SCHEDULE 40 HOT DIPPED GALVANIZED
- AUGERED HOLES, CONCRETE TYPE 50, 25 MPa, SMOOTH FINISH
- CONCRETE TO DRAIN AWAY FROM POST AT FINAL GRADE
- ALL FASTENINGS, WIRE & HARDWARE GALVANIZED STEEL
- MIDDLE BRACE RAIL AT ALL END AND GATE SECTIONS
- TIE WIRES FOR FABRIC TO LINE POSTS, RAILS AND TENSION WIRE 300 O.C.
- TENSION BAR BRACE BANDS AT MINIMUM 300 O.C.

PLAN:



THE CITY OF
SPRUCE GROVE

PLANNING AND INFRASTRUCTURE

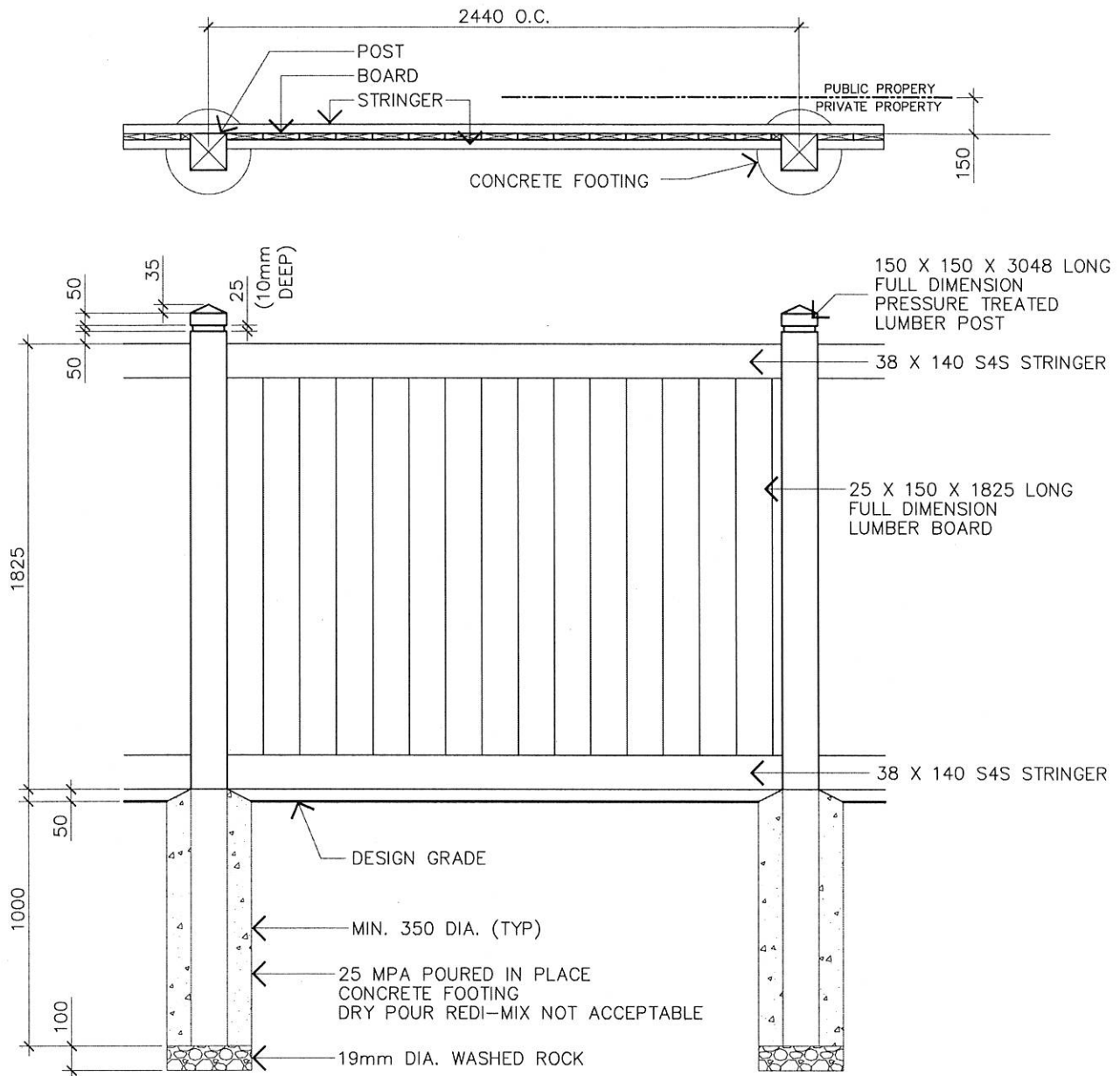
REVISIONS

DATE	DETAILS	DRAWN
2012	ADDITION TO NOTES	A.S.

CHAIN LINK FENCE



DRAWN: T. CRAWFORD	DATE:
CHECKED: J. MUSTARD	SCALE: NOT TO SCALE
APPROVED: J. MUSTARD	DRAWING No.: LG-04




NOTE:

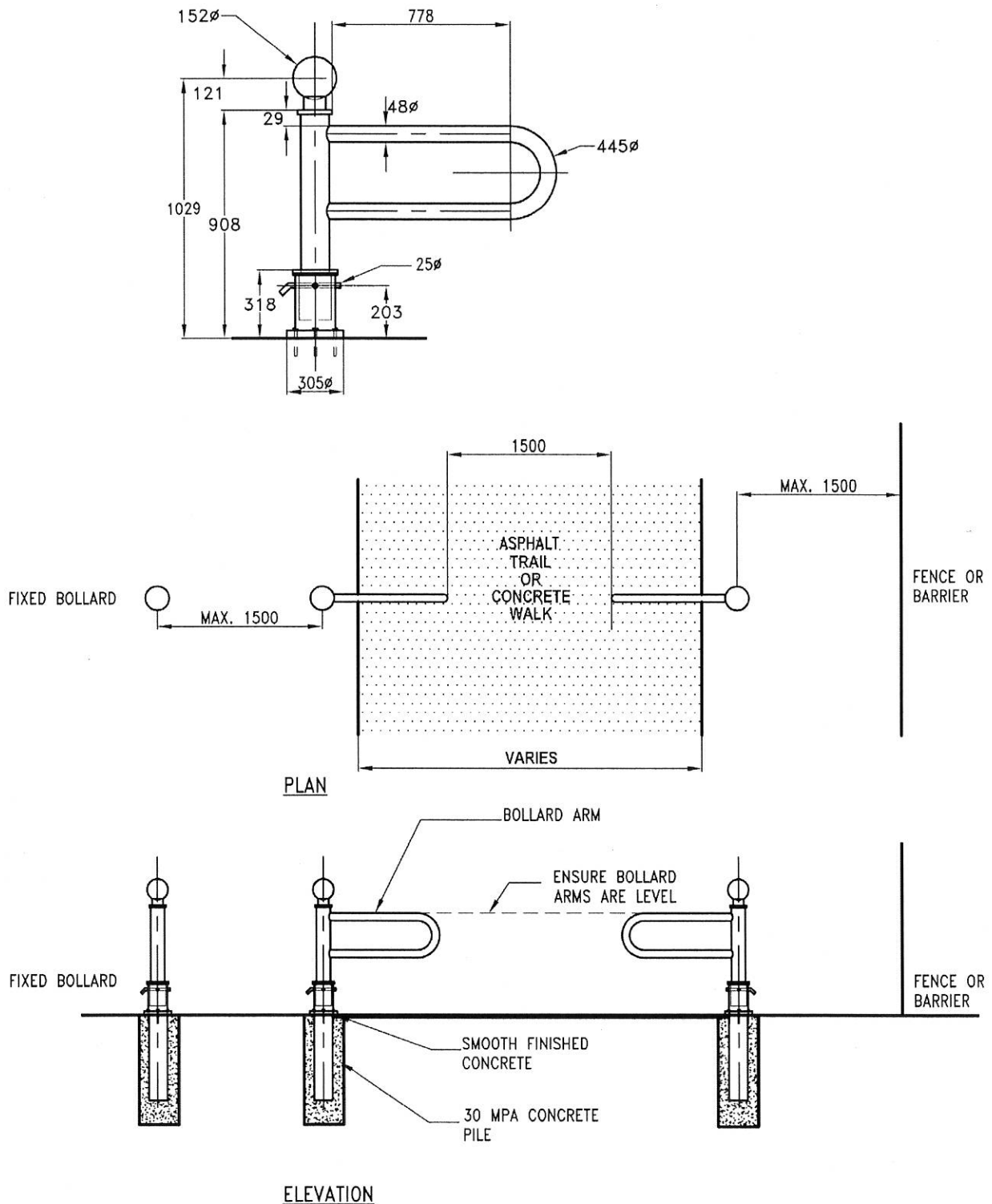
ALL LUMBER TO RECEIVE 2 COATS OF STAIN.

BOARDS TO BE NAILED TO STRINGERS
WITH GALVANIZED ARDOX NAILS MIN. 57 LONG
3 PER BOARD PER STRINGER.

THE CITY OF
SPRUCE GROVE

PLANNING AND INFRASTRUCTURE

REVISIONS			TYPICAL WOOD SCREEN FENCE		
DATE	DETAILS	DRAWN			
				DRAWN: A. STACHNIAK	DATE: JULY 17, 2012
				CHECKED: J. MUSTARD	SCALE: NOT TO SCALE
				APPROVED: J. MUSTARD	DRAWING No.: LG-05



THE CITY OF
SPRUCE GROVE

PLANNING AND INFRASTRUCTURE

REVISIONS

DATE	DETAILS	DRAWN

SWING GATE BOLLARD



DRAWN: A. STACHNIAK

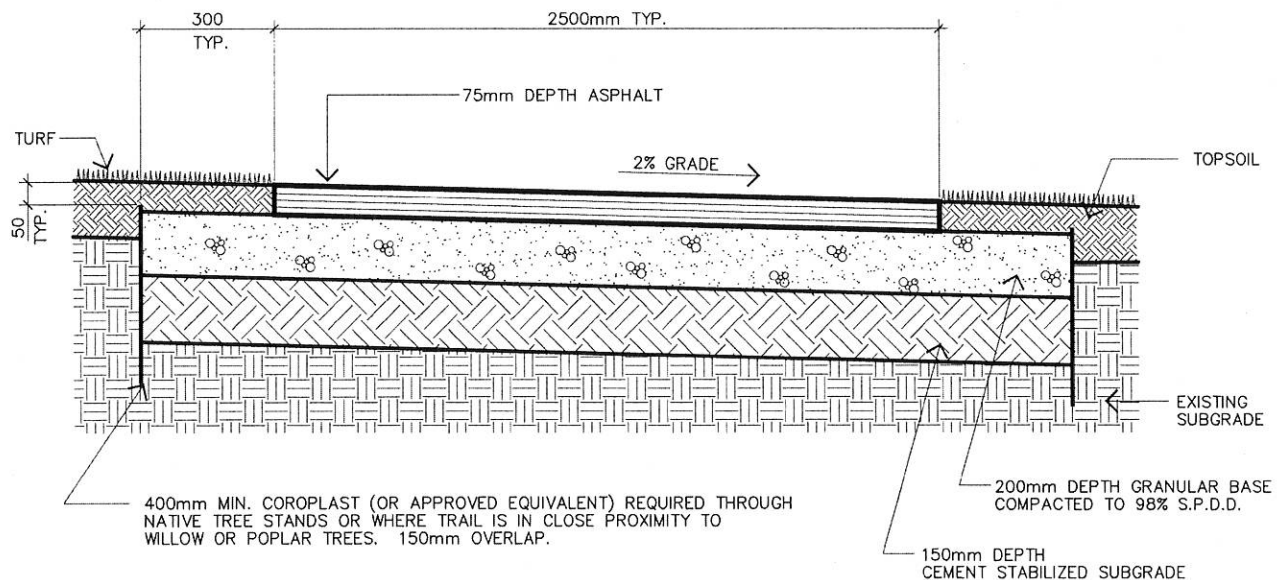
DATE: JULY 17, 2012

CHECKED: J. MUSTARD

SCALE: NOT TO SCALE

APPROVED: J. MUSTARD

DRAWING No.: LG-06



NOTE:

CONTRACTORS RESPONSIBILITY TO REHABILITATE ALL DISTURBED AREAS ALONG TRAIL EDGE WITH TOPSOIL AND SOD

THE CITY OF
SPRUCE GROVE

PLANNING AND INFRASTRUCTURE

REVISIONS

DATE	DETAILS	DRAWN
2/12/14	REVISED SUBGRADE SPEC	A.S.

TYPICAL PRIMARY TRAIL



DRAWN: A. STACHNIAK

DATE: JULY 17, 2012

CHECKED: J. MUSTARD

SCALE: NOT TO SCALE

APPROVED: J. MUSTARD

DRAWING No.: LG-07